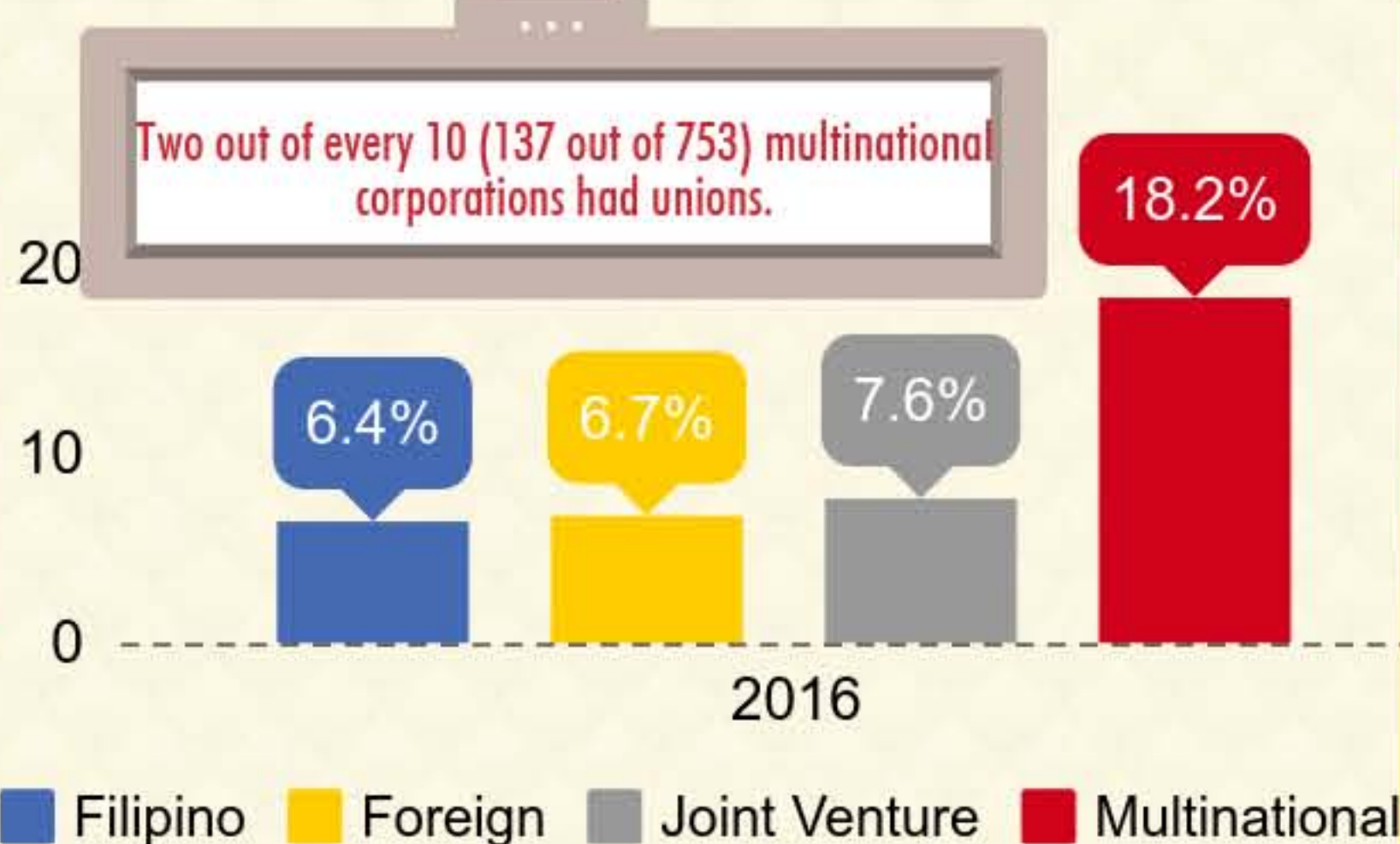


2015/2016 INTEGRATED SURVEY ON LABOR AND EMPLOYMENT (ISLE)

(Modules on Unionism and Collective Bargaining; Productivity-Based Incentive Schemes; Occupational Safety and Health Practices; and Occupational Injuries and Diseases)

EXTENT OF UNIONISM & COLLECTIVE BARGAINING: 2016

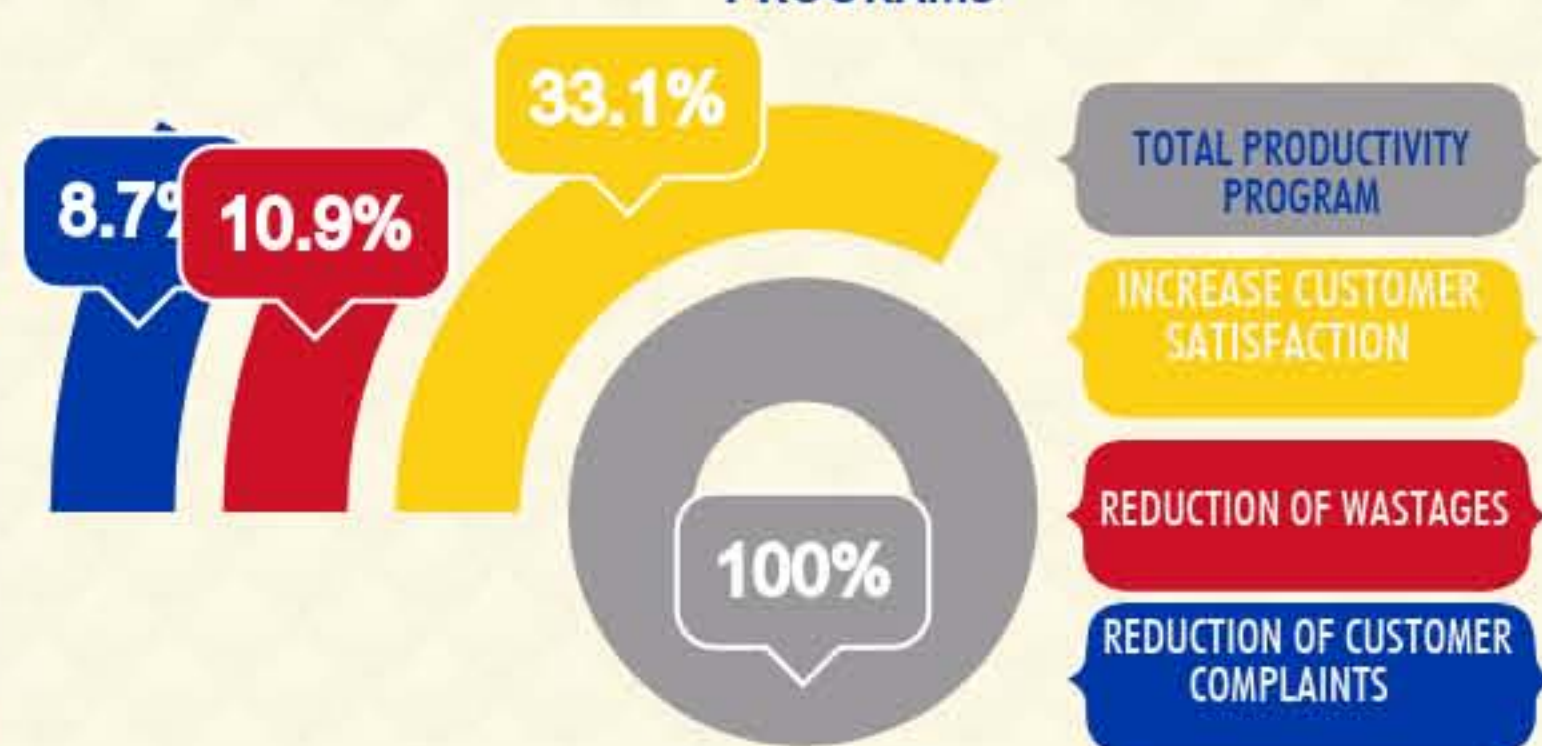
"Of the total 31,277 establishments, **6.7%** had unions in 2016.. a minimal increase of almost 1% from the **5.8%** share in 2014.



PRODUCTIVITY-BASED INCENTIVE SCHEMES: 2015

2,448
ESTABLISHMENTS
IMPLEMENTED
PRODUCTIVITY
PROGRAMS IN 2015

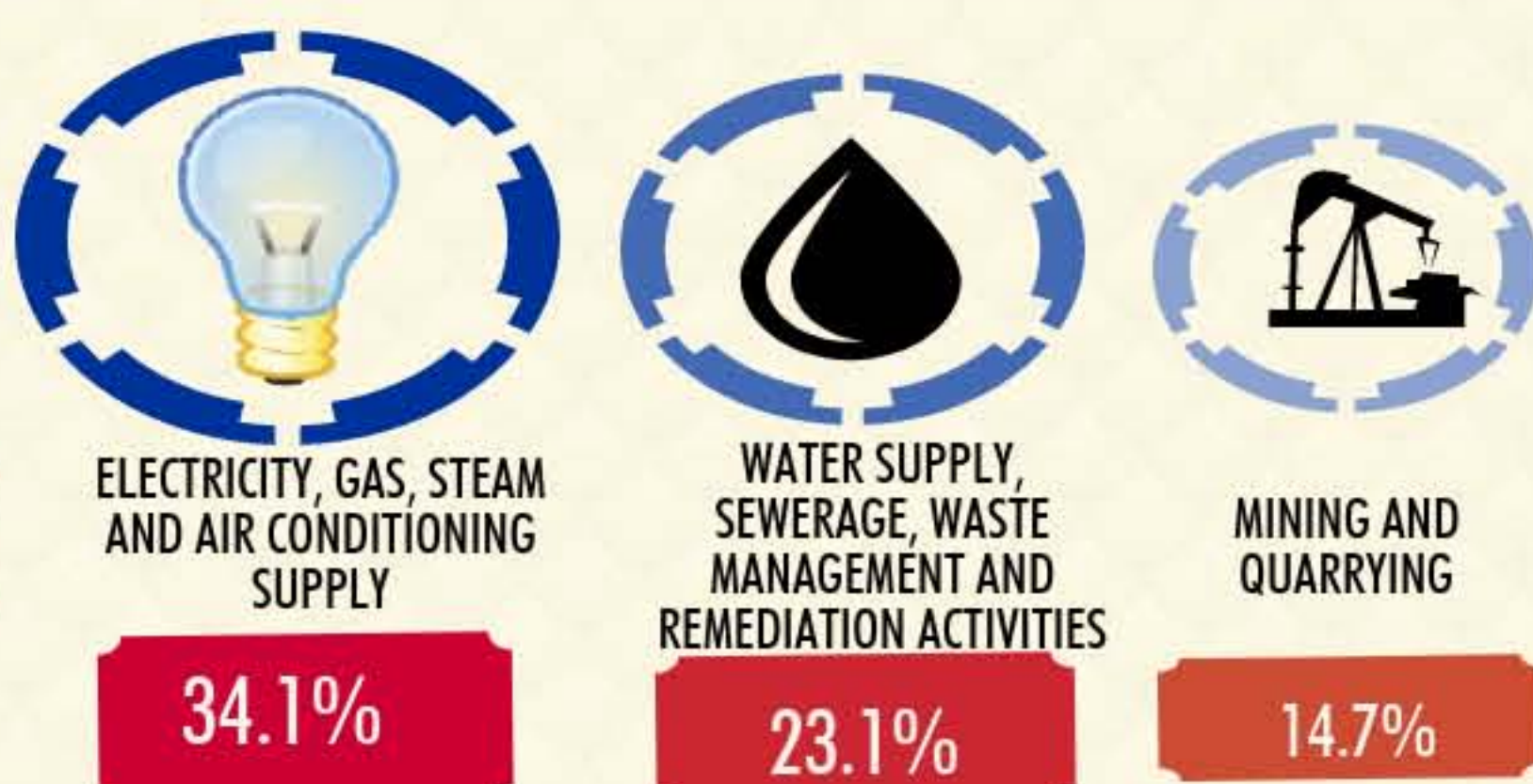
TOP 3 PRIMARY OBJECTIVES OF PRODUCTIVITY PROGRAMS



TOP 5 SECTORS THAT IMPLEMENTED PRODUCTIVITY PROGRAM

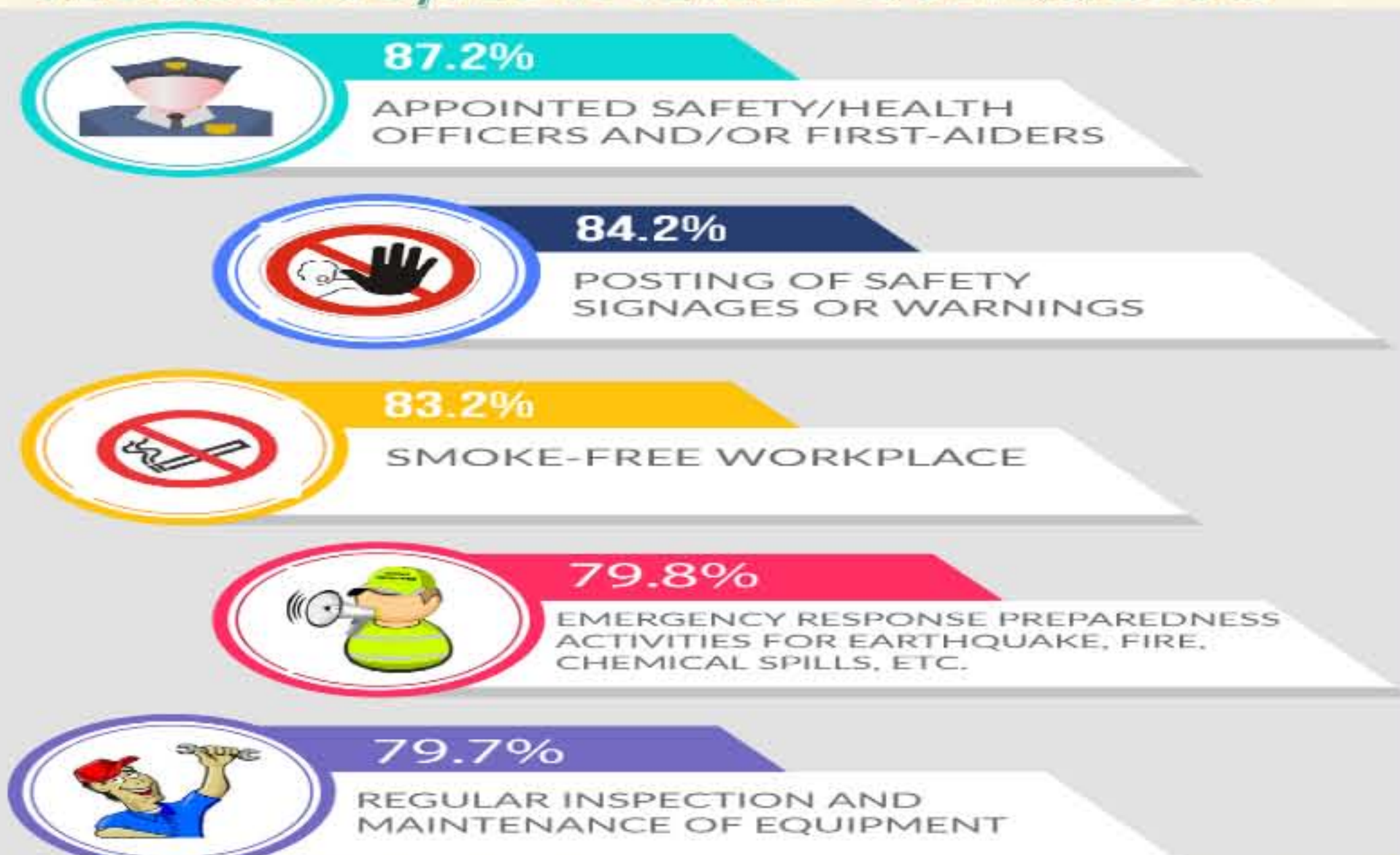


Electricity, Gas, Steam and Air Conditioning Supply is the **MOST UNIONIZED** industry



OCCUPATIONAL SAFETY AND HEALTH PRACTICES: 2015

TOP 5 Preventive and Control Measures/Activities Conducted



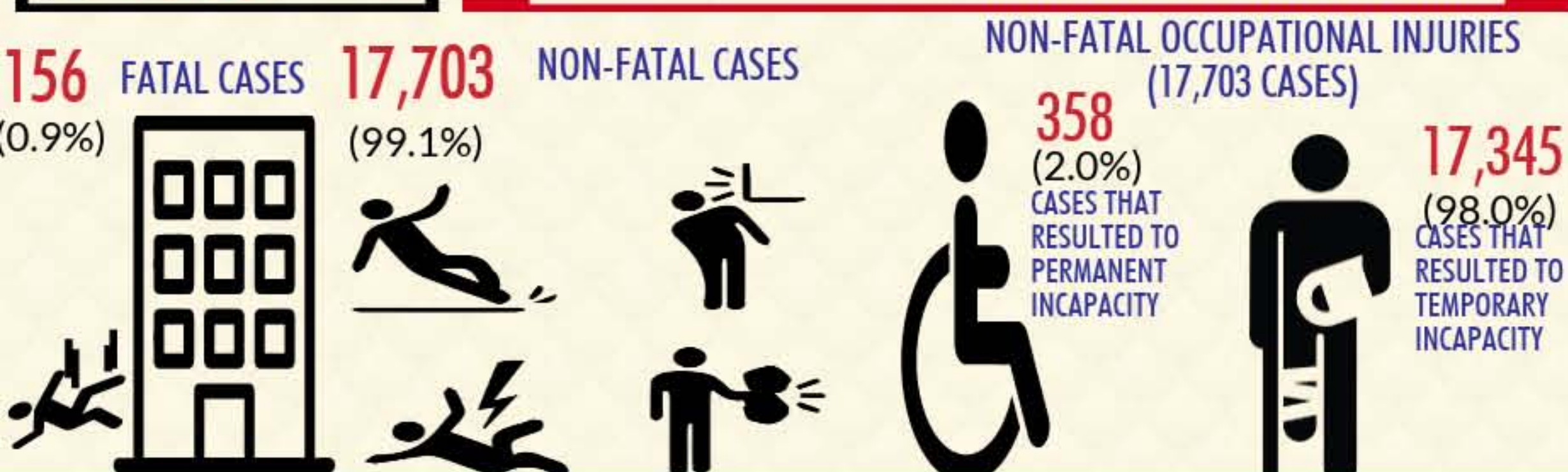
TOP 3 SECTORS with designated health and safety personnel



WORKPLACE INJURIES & WORK-RELATED DISEASES: 2015

Out of 50,961 reported cases of occupational injuries, **65%** (or 33,102) are without workdays lost.

OCCUPATIONAL INJURIES WITH WORKDAYS LOST (17,859 CASES)



TOP 3 WORK-RELATED DISEASES IN 2015

