



Republic of the Philippines
Department of Agriculture
BUREAU OF AGRICULTURAL STATISTICS

Situation Report on Major Vegetables and Root Crops

January-March 2008

Vol. 1

No. 1



June 2008

EXPLANATORY NOTES

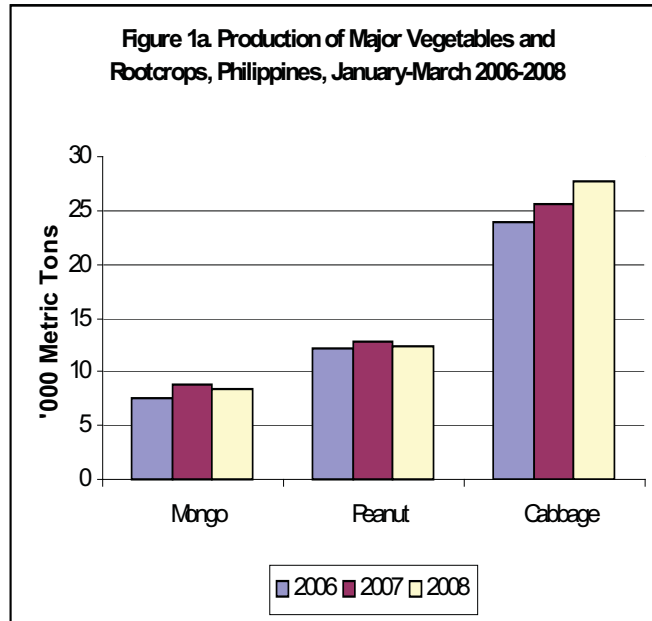
Starting this year, 2008, the Bureau of Agricultural Statistics (BAS) is coming out with a quarterly situation report on nine (9) major vegetables and root crops, namely, mongo, peanut, cabbage, eggplant, tomato, garlic, onion, camote and cassava. These commodities are highlighted in the BAS' quarterly report on the Performance of Agriculture. The quarterly report contains information on production, prices and trade. Data on area harvested which are collected on a semestral basis are reported during the second and fourth quarter issues.

Production data are based on the results of the quarterly Crop Production Survey of BAS. Data on prices are sourced from the BAS Farm Price Survey (FPS) and the Integrated Agricultural Marketing Information System-Agricultural Marketing News Service (AGMARIS-AMNEWSS). The report incorporates data on foreign trade which are obtained from the National Statistics Office (NSO) and organized by Agricultural Marketing Statistics Analysis Division (AMSAD) of the BAS. Due to the lag in their availability, export and import data may not cover the whole reference quarter.

PRODUCTION

Mongo. Production during the first quarter of 2008 was estimated at 8.35 thousand MT, 5.5 percent lower than the production in the same period in 2007. The decrease was attributed to the hampered sowing of mongo because of continuous rainfall that resulted in smaller area harvested in most parts of Antique and Iloilo. Incidence of aphids and shifting to other cash crops such as okra and yellow corn in Pangasinan also contributed to the decrease.

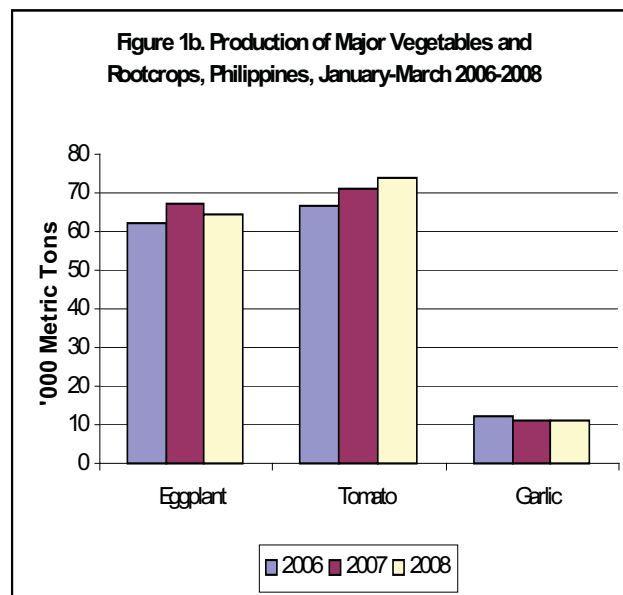
Peanut. Production in January to March 2008 was 12.3 thousand MT, 4.6 percent lower than the 12.9 thousand MT in same period in 2007. Most farmers opted to plant yellow corn, watermelon and stringbeans in the province of La Union and Pangasinan because of the unfavorable market price of peanut in the previous cropping season.



Cabbage. Production reached 27.7 thousand MT in the first quarter 2008. It posted an 8.4 percent increase from the 2007 output of 25.6 thousand MT. The increase was due to the newly opened areas in the top cabbage producing provinces of Benguet and Ifugao. Harvest was also good due to lower incidence of pests and diseases.

Eggplant. Output was down by 3.9 percent, from 67.1 thousand MT in the first quarter of 2007 to 64.5 thousand MT in 2008. This was due to shifting to yellow corn in Pangasinan. Also, continuous heavy rains during the flowering stage affected production in other major eggplant producing provinces.

Tomato. Production in the first three months of 2008 was recorded at 73.6 thousand MT, up by 3.3 percent from the output of the same period in 2007. The increment was the result of increased area planted in anticipation of higher price. High yielding varieties such as Maguilla, Ilocos Red and Apollo boosted production in Ilocos Sur and La Union. On the other hand, the Sentrong Pamilihan ng Produktong Agrikultural ng Quezon Foundation Incorporated (SPPAQFI), a local government supported financing institution extended technical, marketing and financial assistance that encouraged tomato growers in Quezon.

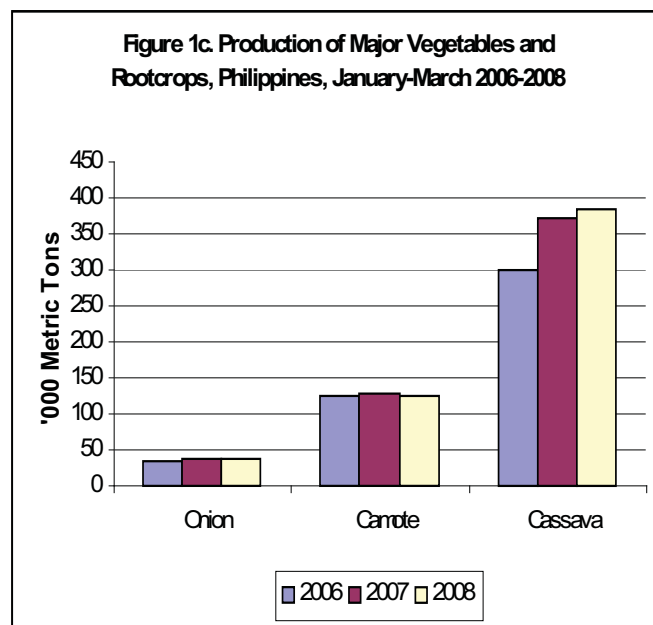


Garlic. Garlic output in the first quarter of 2008 was 10.97 thousand MT or 1.2 percent higher than last year's 10.84 thousand MT. The better market price enjoyed last year motivated farmers to cultivate more areas this season in Ilocos Norte and Occidental Mindoro.

Onion. For the first quarter of 2008, production of Bermuda Onion was 14.3 thousand MT. This was lower by 7.5 percent from last year's output of 15.4 thousand MT. The decrease was due to shifting to other cash crops such as ampalaya and yellow corn in Pangasinan. Likewise, the big volume of harvests last year weakened market price which discouraged some farmers in Occidental Mindoro to grow Bermuda onion.

Native onion production at 21.9 thousand MT declined by 1.2 percent from last year's 22.1 thousand MT. This was due to the effects of purple blotch (an onion disease caused by very sudden change in weather conditions) during bulb formation in Ilocos Sur. Also, some farmers in this province shifted to ampalaya and yellow corn which commanded better market prices.

Camote. Rotting of tubers due to excessive soil moisture, which resulted from the continuous heavy rainfall caused production of camote to decline by 2.66 percent from 126.9 thousand MT in first quarter of 2007 to 123.6 thousand MT in the same period of 2008.



Cassava. In the first quarter of 2008 cassava output was estimated at 385.6 thousand MT, up by 3.5 percent compared with the 2007 level of 372.5 thousand MT. Increased demand for shipment to Davao City feed milling stations, encouraged farmers in Lanao Sur to increase their area devoted to cassava production. Moreover, favorable market price of cassava chips contributed to the increase in area devoted to cassava.

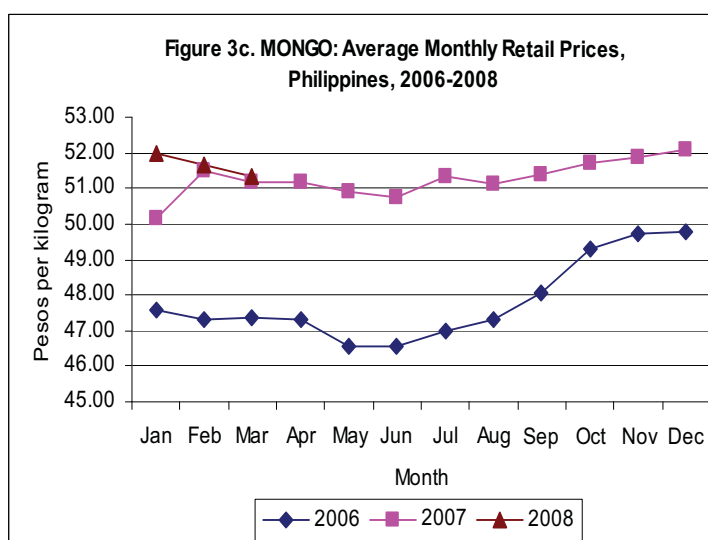
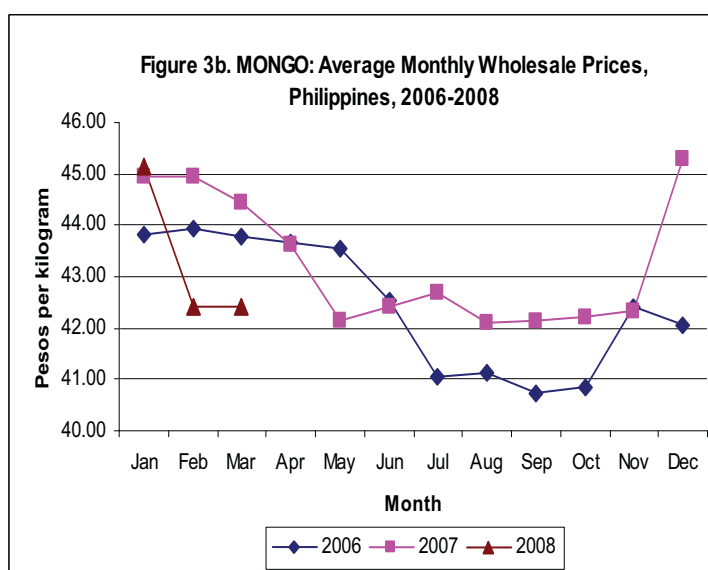
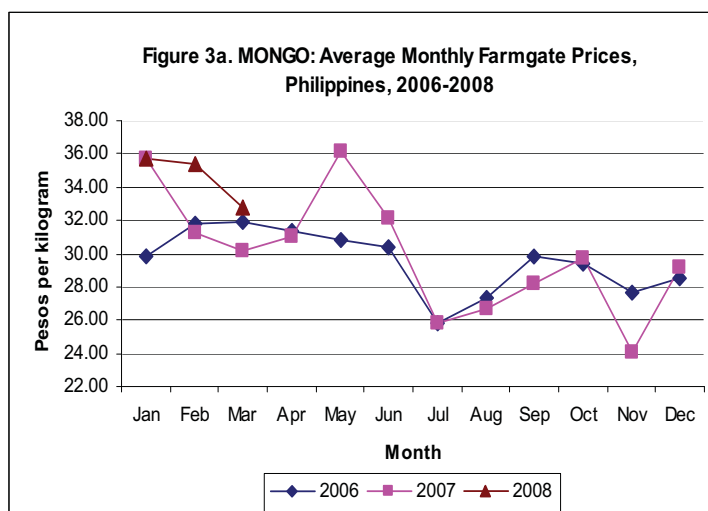
PRICES

Mongo

The average farmgate price of mongo for the first quarter 2008 was P34.60 per kilogram. This was 6.9 percent higher than the 2007 average price of P32.37. On a monthly basis, the January 2008 level posted the same price as that of January 2007 at P35.66 per kilogram. Following the February and March farmgate quotations for mongo, they were higher compared to prices in the same period of 2007.

At wholesale, the average price of mongo in the first three months of 2008 was P43.33 per kilogram, 3.2 percent lower than the previous year's average. In January 2008, price was a P0.22 per kilogram higher than its 2007 level. As prices in the succeeding two months were on the decreasing trend, a price cut of about P2.00 from the February and March 2007 quotations were noted.

Average retail prices of mongo were consistently higher in January to March 2008 than their corresponding levels in the same period of 2007. The quarter's average retail price was P51.65 per kilogram in January to March 2008. It was higher by 1.4 percent compared with 2007 average price of P50.96 per kilogram.



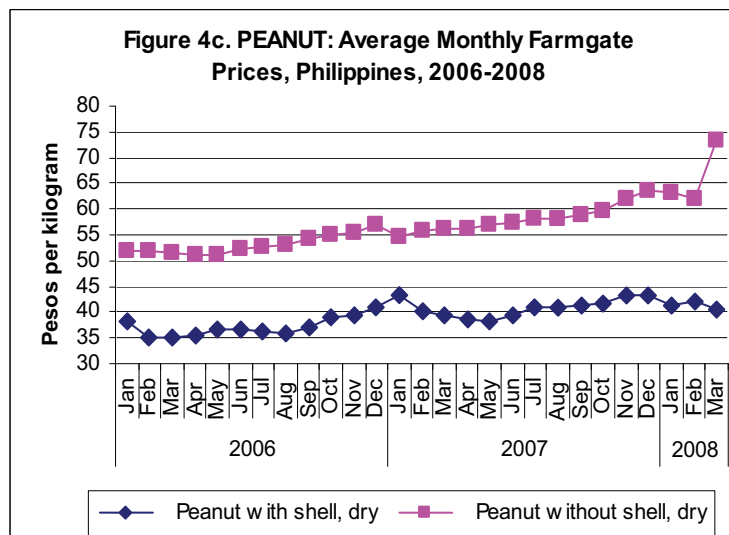
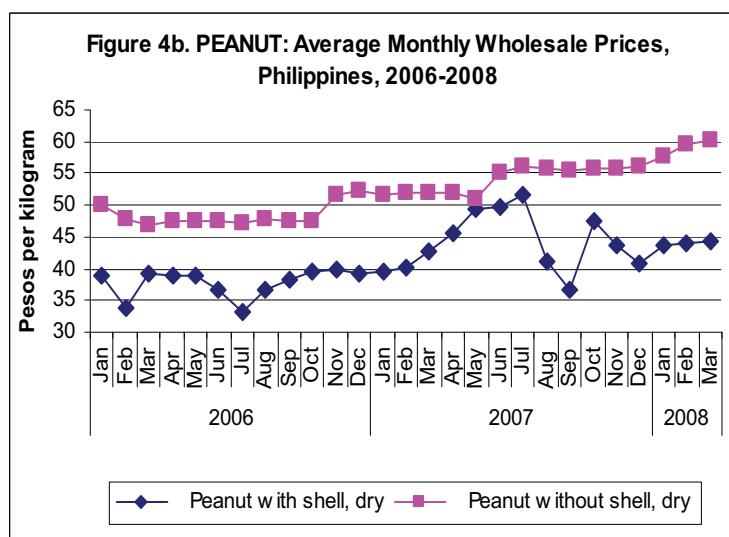
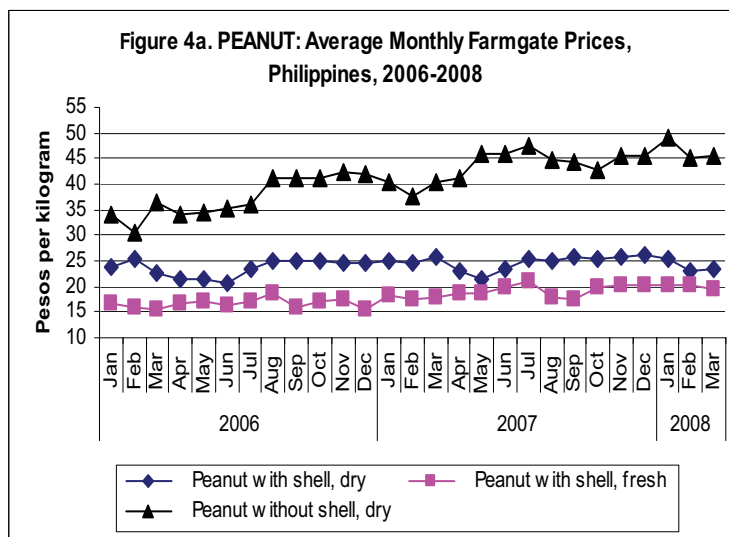
Peanut

Average farmgate price of dry peanut with shell for the first quarter of 2008 was P24.04 per kilogram. This was lower by 4.51 percent compared with 2007 average price of P25.18 per kilogram. On the other hand, prices of fresh peanut with shell and dry peanut without shell increased by 11.4 and 17.9 percent, respectively, compared to their 2007 levels.

For the period January to March 2008, average wholesale prices of dry peanuts with and without shell were P44.06 and P59.12 per kilogram, respectively. These prices were higher by 8.0 percent and 14.0 percent compared with average prices in the same period of 2007.

At retail, the average price of dry peanut with shell during the first quarter of 2008 was P41.34 per kilogram. This was higher by P0.43 from the 2007 level.

Average retail price of dry peanut without shell from January to March 2008 was P66.13 per kilogram, 19.2 percent higher than in the same period of 2007.

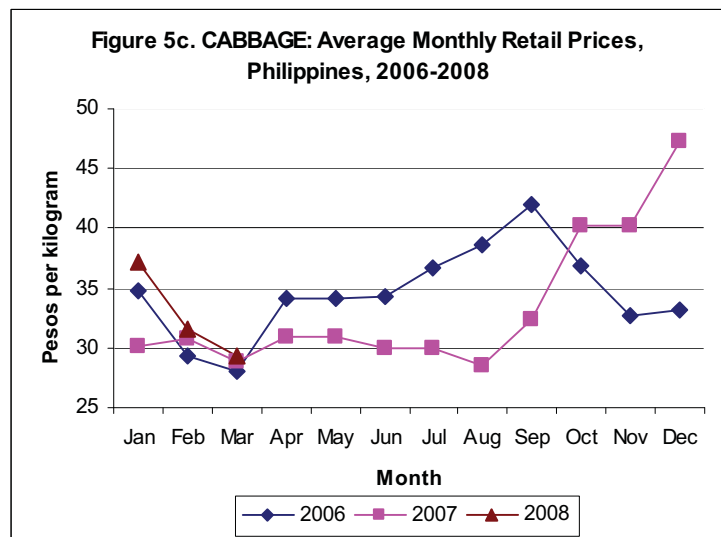
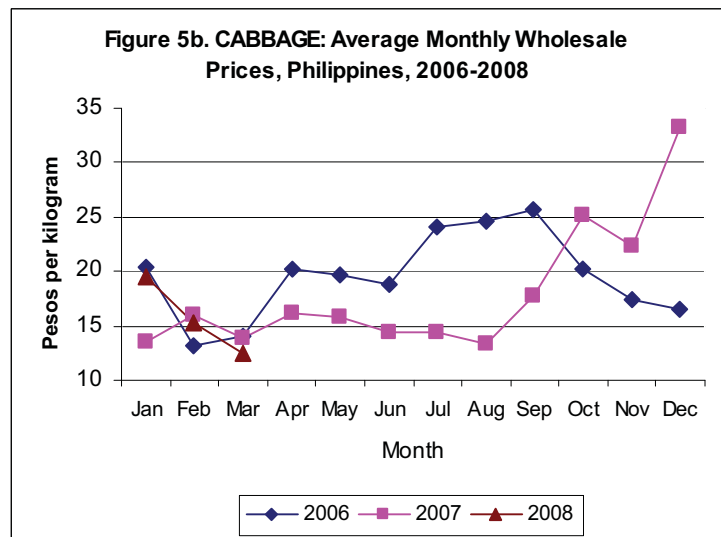
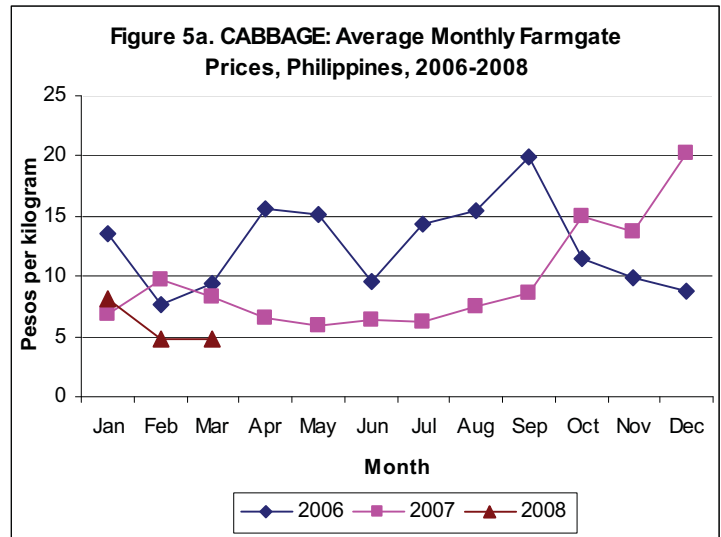


Cabbage

The national average farmgate price of cabbage from January to March 2008 was P5.91 per kilogram, lower by P2.42 and P4.30 than the 2007 and 2006 averages, respectively.

At wholesale, the average price of cabbage at P15.74 per kilogram posted a 9.2 percent increase in the first three months of 2008 compared with the price in the same period of 2007.

At retail, the average price of cabbage was P32.67 per kilogram during the first quarter of 2008. This was 9.4 percent higher than the 2007 average price of P29.85 per kilogram.



Eggplant

Average farmgate price of eggplant during the first quarter of 2008 was P19.20 per kilogram. This was 69.4 percent lower compared with 2007 average price of P11.34 per kilogram.

Monthly farmgate prices of eggplant in January to March 2008 were on the decreasing trend. Prices followed the monthly price movement in the same period of 2007.

Average wholesale price of eggplant in the first quarter of 2008 was P27.22 per kilogram, higher by 48.5 percent from its 2007 quotation of P18.33 per kilogram.

The monthly retail prices of eggplant in January to March 2008 were relatively higher compared to prices in the same months in 2007. The average retail price during this period was P38.47 per kilogram, up by 33.2 percent compared with the previous year's average of P28.88 per kilogram.

Figure 6a. EGGPLANT: Average Monthly Farmgate Prices, Philippines, 2006-2008

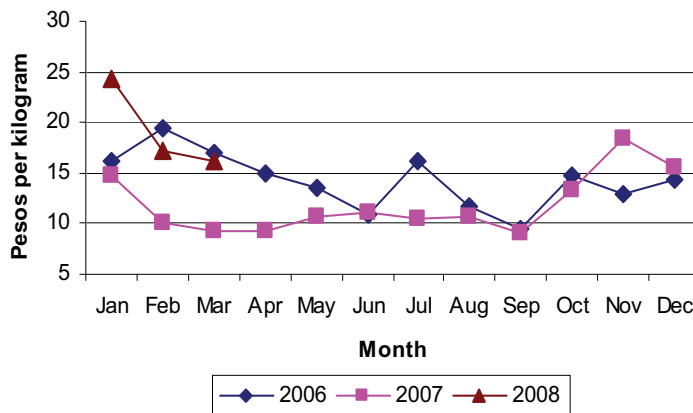


Figure 6b. EGGPLANT: Average Monthly Wholesale Prices, Philippines, 2006-2008

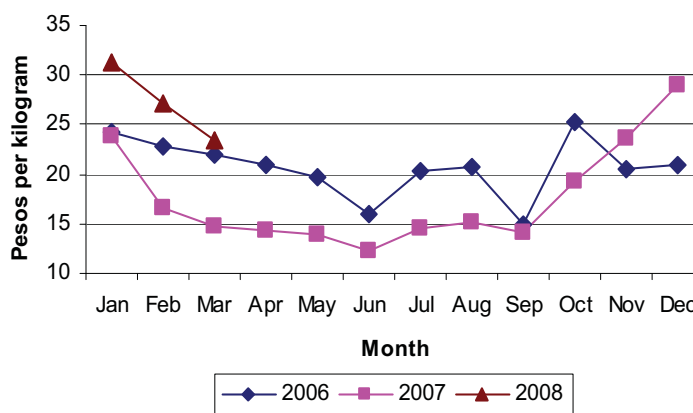
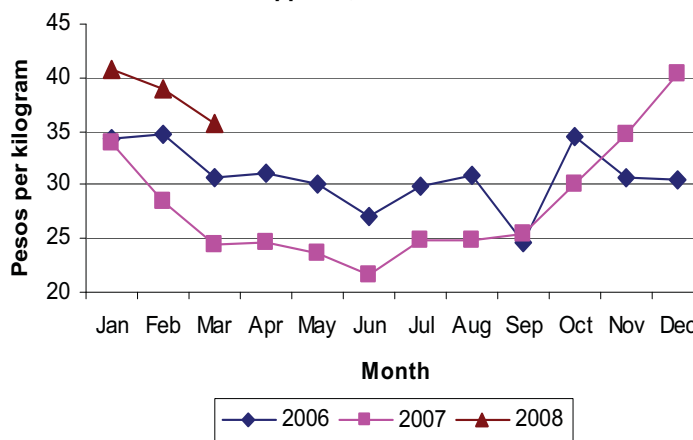


Figure 6c. EGGPLANT: Average Monthly Retail Prices, Philippines, 2006-2008

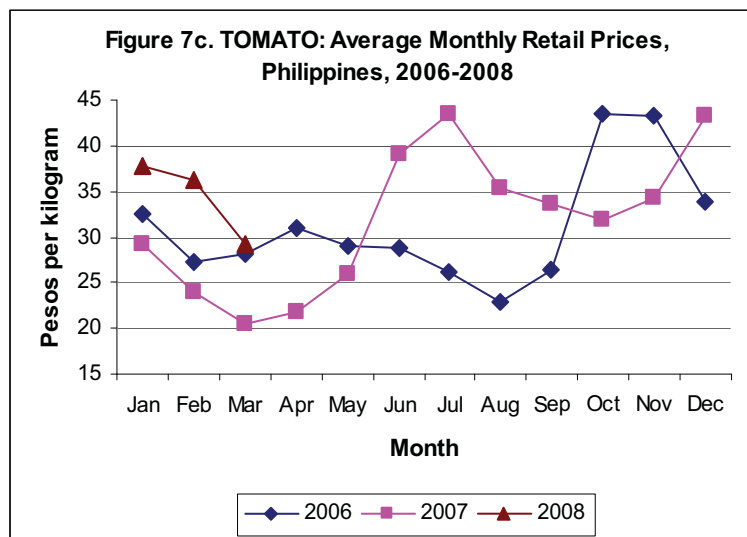
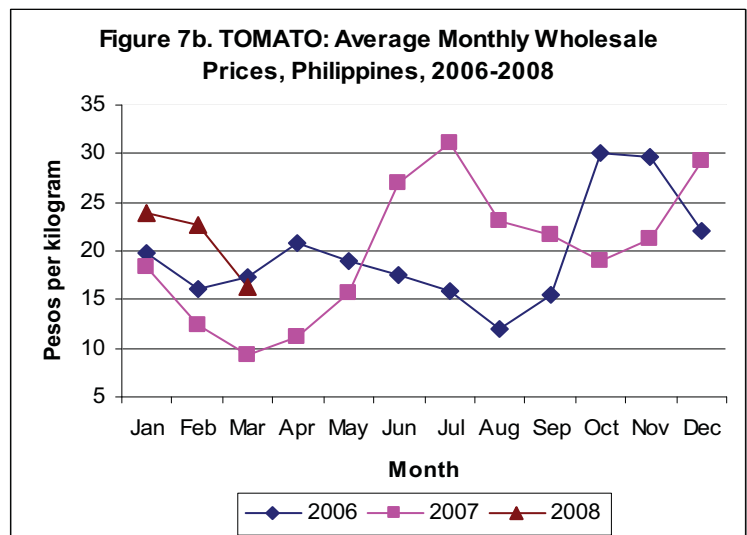
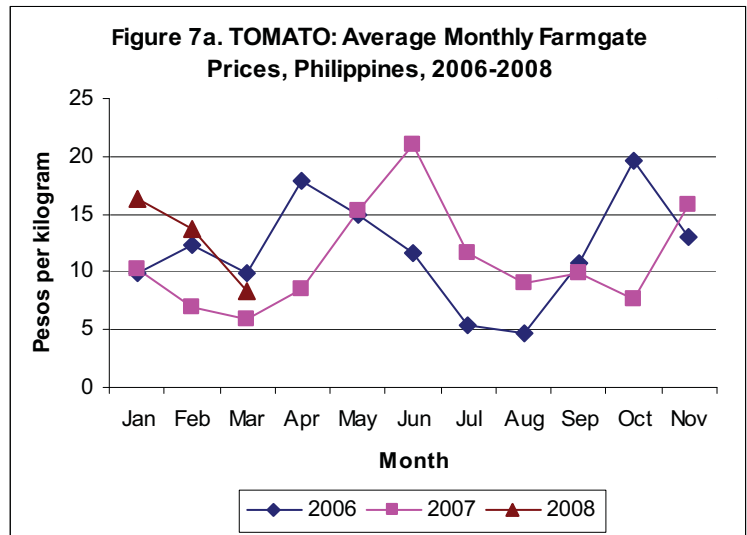


Tomato

At farmgate, the average price of tomato in 2008 was P12.79 per kilogram. It increased by about 67 percent compared with the 2007 average price of P7.66 per kilogram. Monthly prices of tomato for the first quarter 2008 were higher than their corresponding monthly levels in 2007.

Average wholesale price of tomato for January to March 2008 was P20.94 per kilogram. This was 56.2 percent higher than the average price of the previous year' P13.41 per kilogram.

The January-March 2008 average retail price of tomato was P34.41 per kilogram. This increased by 40.3 percent compared with the average price in same period of 2007 at P24.52 per kilogram.



Garlic

Average farmgate price of garlic in the first quarter of 2008 was P53.06 per kilogram. It indicated a decline by 23.2 percent from the average price of P69.10 per kilogram in the same period of 2007.

At wholesale, average price of garlic during the first quarter 2008 was P117.95 per kilogram. This was lower by 11.3 percent compared to same period in 2007 of P133.04 per kilogram.

Monthly retail prices of garlic from January to March 2008 were continually decreasing. The average retail price during the period was P158.82 per kilogram. This was 8.8 percent lower than last year's P174.21 per kilogram.

Figure 8a. GARLIC: Average Monthly Farmgate Prices, Philippines, 2006-2008

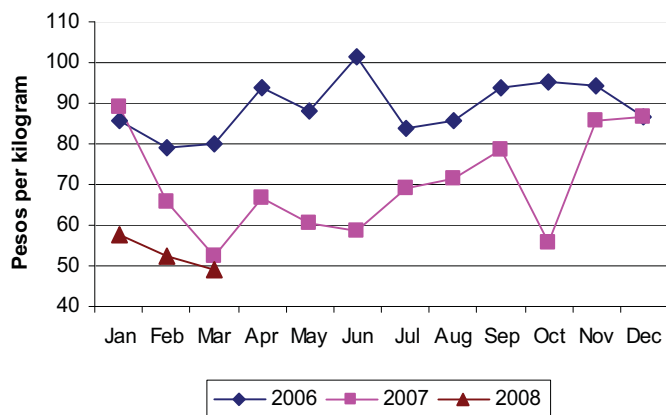


Figure 9b. GARLIC: Average Monthly Wholesale Prices, Philippines, 2006-2008

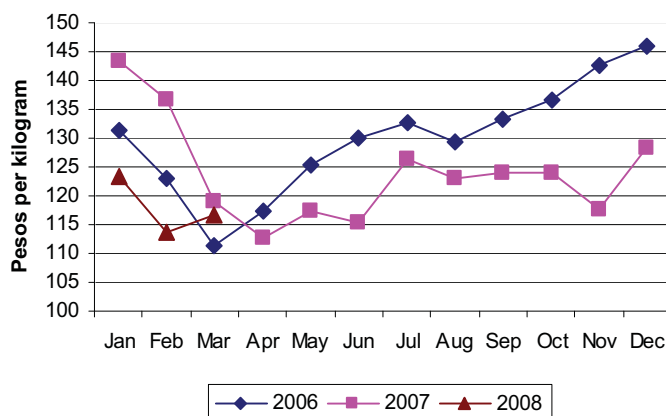
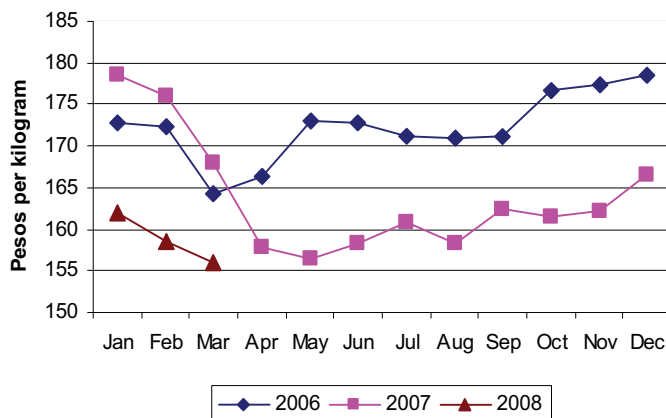


Figure 9c. GARLIC: Average Monthly Retail Prices, Philippines, 2006-2008



Onion

The average farmgate prices of red creole (Bermuda Red) and white onion for the period January to March 2008 were P37.78 and P29.52 per kilogram, respectively. These prices were higher by about 65.0 percent than their corresponding averages in the first quarter 2007 of both onion varieties. The price of native onion increased by 27.0 percent in the first quarter of 2008 average compared with the 2007 level at P18.77 per kilogram.

At wholesale, the national average price of Bermuda onion for the first three months of 2008 was P64.27 per kilogram. This was higher by 68.4 percent than the 2007 price. The average price of white (Yellow Granex) onion also increased by 40.0 percent from P23.14 per kilogram in 2007 to P32.31 in 2008.

Average retail prices of Bermuda onion and Onion White for the first quarter 2008 increased by 53.9 and 37.8 percent, respectively, compared with the averages in the same period of 2007.

Prices of Bermuda onion at all levels were highest in January 2008. These declined in the next two months.

Figure 10a. ONION: Average Monthly Farmgate Prices, Philippines, 2006-2008

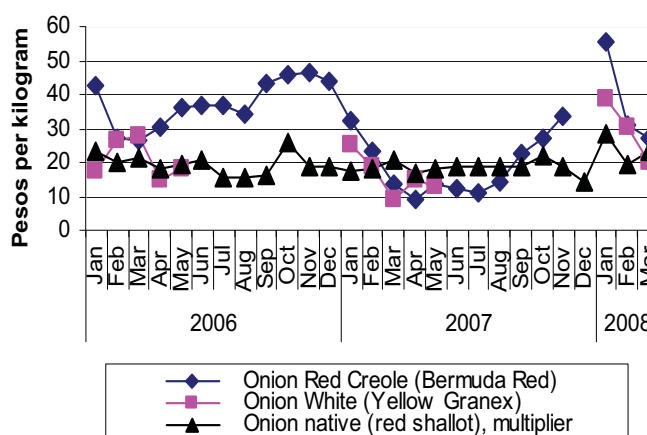


Figure 10b. ONION: Average Monthly Wholesale Prices, Philippines, 2006-2008

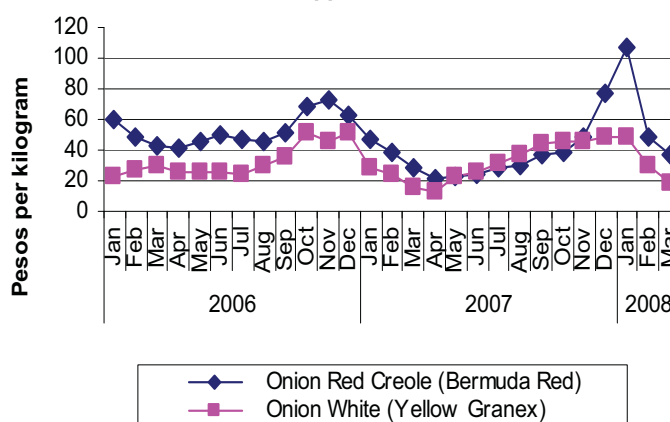
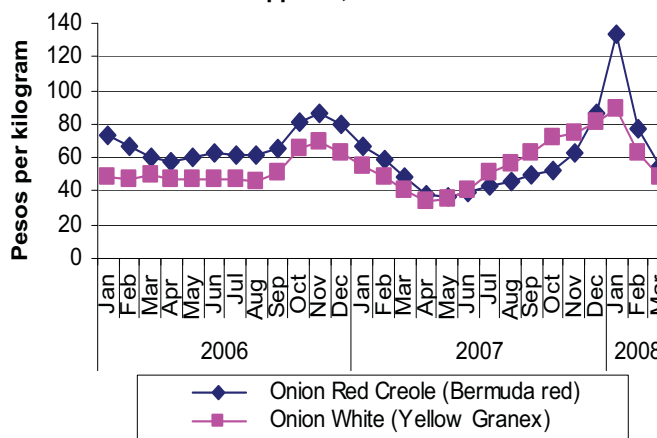


Figure 10c. ONION: Average Monthly Retail Prices, Philippines, 2006-2008

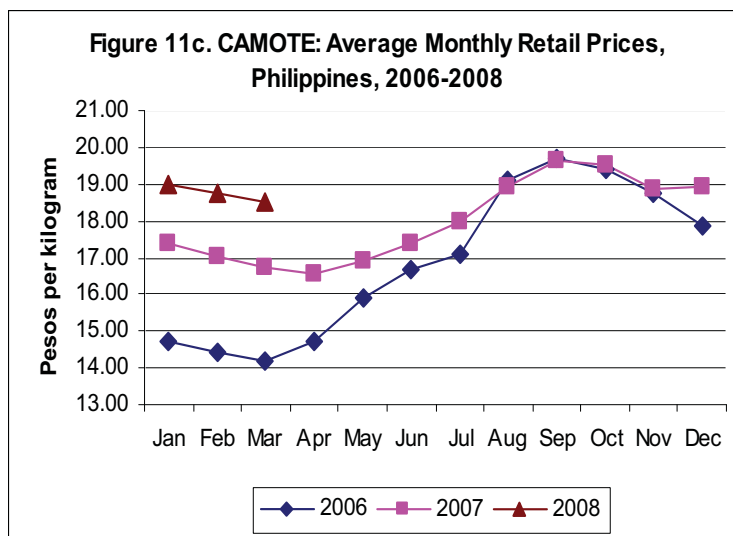
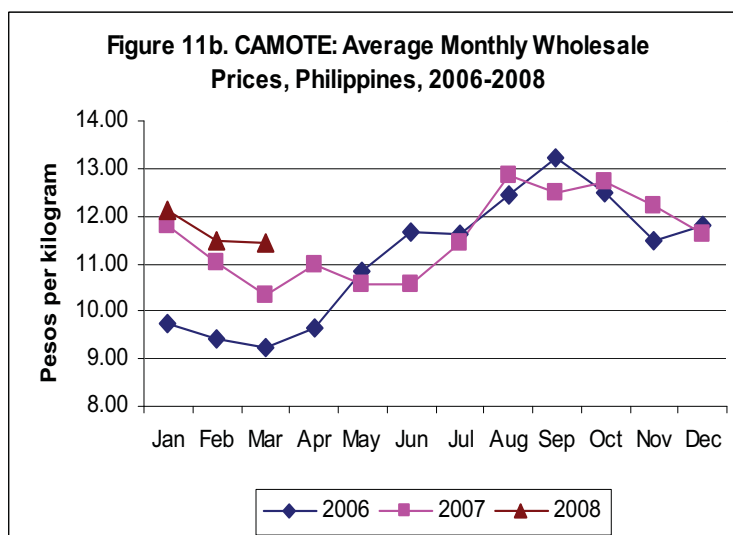
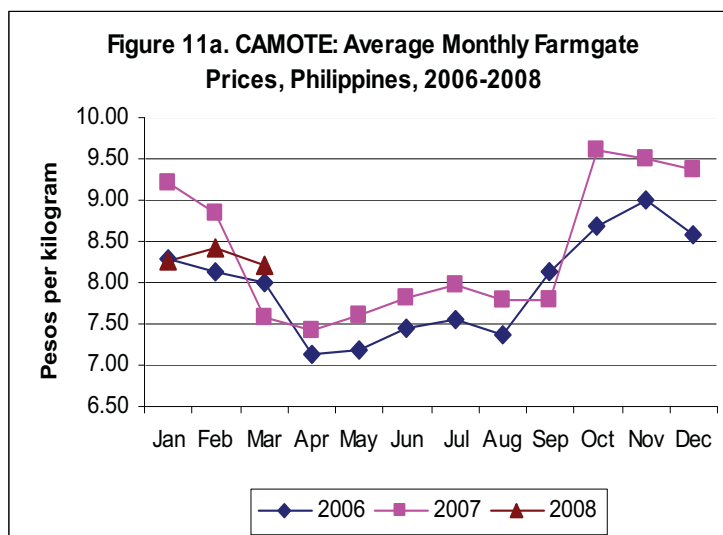


Camote

In January-March 2008, the average farmgate prices of camote was P8.29 per kilogram. It was 3.0 percent below the average price of P8.55 per kilogram in the same period of 2007.

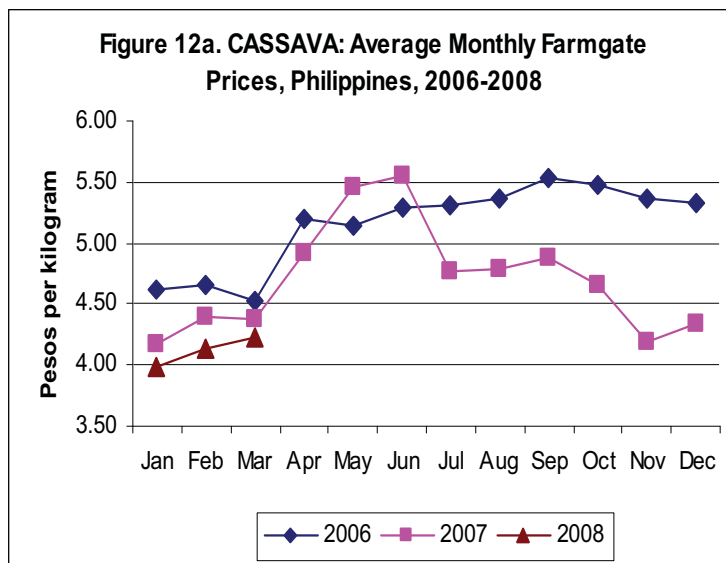
Average wholesale price of camote for the first three months of 2008 was P11.78 per kilogram. It posted an increment by P0.37 from the average price in the same period of 2007.

On the average, the retail price of camote in the first quarter 2008 was P18.77 per kilogram. This was higher by 10.1 percent in comparison with the average price of P17.05 per kilogram from January to March of 2007.

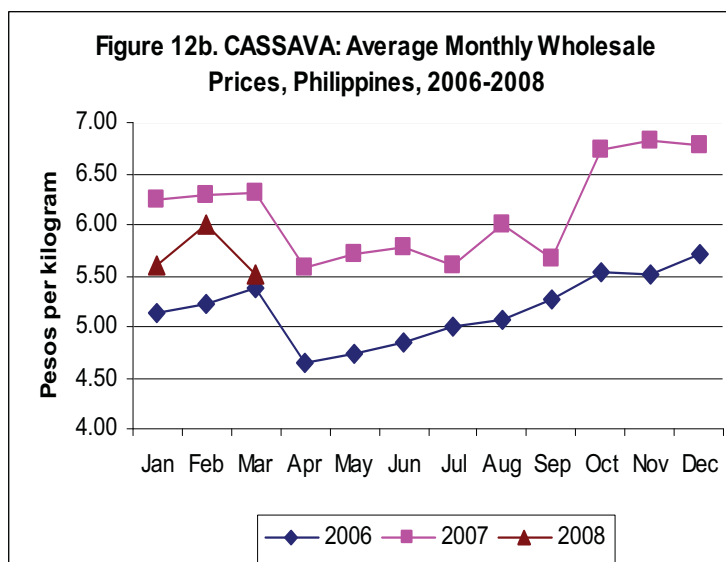


Cassava

The average farmgate price of cassava in the first quarter of 2008 was P4.12 per kilogram. This was lower by 4.6 percent from the 2007 level. Its monthly farmgate prices in January to March 2008 followed an increasing trend.



The average wholesale price of cassava in the first quarter of 2008 was P5.71 per kilogram. This was a 9.1 percent lower than the average price of P6.28 per kilogram in the same period of 2007.



TRADE

MONGO

Exports

Mongo exports for the period January to February 2008 was 2.8 MT valued at US\$2.73 thousand. This was 488.0 percent higher than the 2007 level at 0.47 MT and 8.0 percent higher in value than their levels from January to February 2007.

The main destination of mongo exports was the United States.

Imports

Mongo imports in the first two months of 2008 was 11.82 thousand MT valued at US\$1.48 million. The volume was 170.0 percent higher than the January-February 2007 level of 4.38 thousand MT. Import value was 72.0 percent higher than the 2007 level of US\$0.86 million.

The major sources of imported mongo were Indonesia and Myanmar. These countries accounted for 47.0 percent of the total volume imported during the period.

Figure 12. MONGO: Volume and Value of exports, Philippines, January-February, 2006-2008

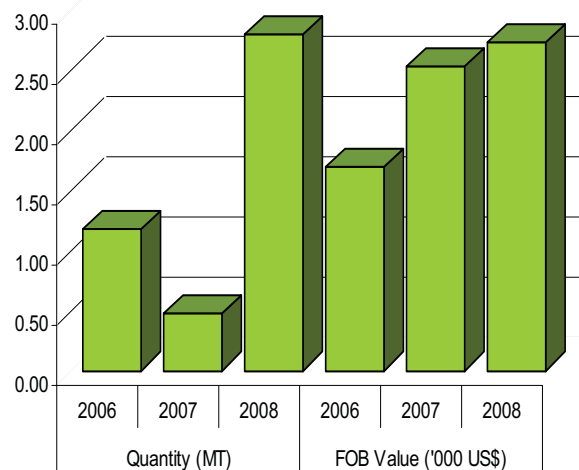
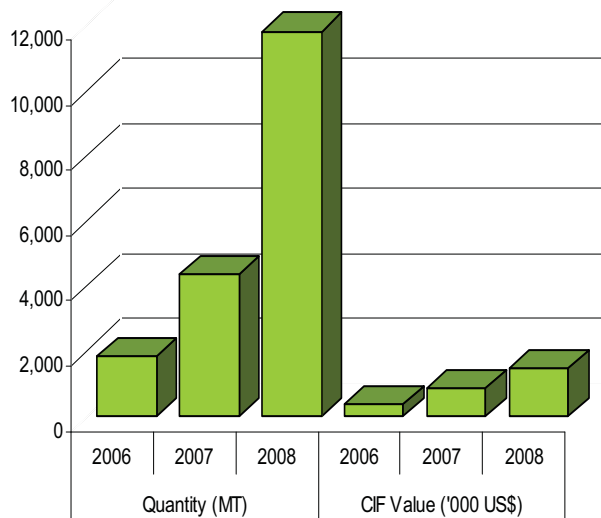


Figure 13. MONGO: Volume and Value of imports, Philippines, January-February, 2006-2008

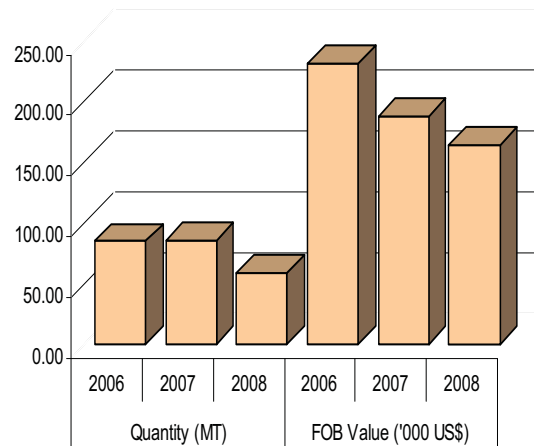


PEANUT

Exports

In the first two months of 2008, peanut exports reached 59.0 MT worth US\$164.6 thousand. The volume was 30.9 percent lower than the 2007 level of 85.34 MT. Correspondingly, the export value went down by 12.2 percent compared with last year's US\$187.3 thousand.

Figure 14. PEANUT: Volume and Value of exports, Philippines, January-February, 2006-2008

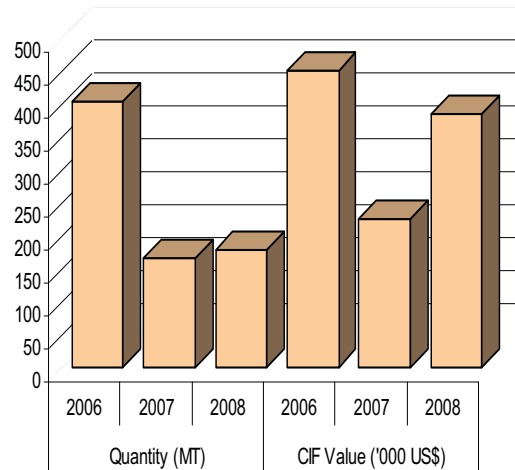


Imports

Peanut imports from January to February 2008 was 180.7 MT valued at US\$386.7 thousand. This year's volume and value of imports registered 8.5 percent and 70.7 percent increases, respectively, compared to their 2007 levels.

China was the largest supplier of imported roasted peanuts and peanut butter in the same period of 2008.

Figure 15. PEANUT: Volume and Value of imports, Philippines, January-February, 2006-2008



CABBAGE

Exports

During the first two months of 2008, there were no reported shipments of cabbage outside the country. On the other hand, around 6 MT of fresh or chilled cabbage valued at US\$1.8 thousand were exported to Taiwan in 2007.

Imports

In the first two months of 2007 and 2008, there were no importations of cabbage in dried, whole, cut, sliced, broken or in powder but not further prepared. However, around 10.0 MT of cabbage entered the Philippine market valued at US\$24.5 thousand in the same period of 2006.

Figure 16. CABBAGE: Volume and Value of exports, Philippines, January-February, 2006-2008

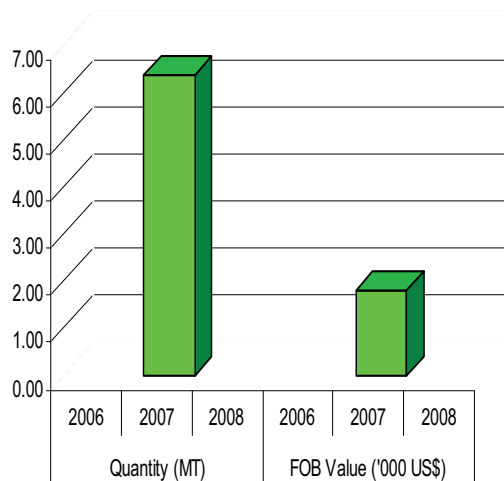
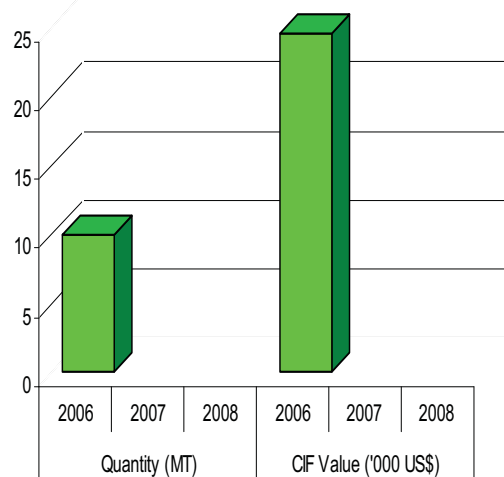


Figure 17. CABBAGE: Volume and Value of imports, Philippines, January-February, 2006-2008



TOMATO

Exports

The volume of tomato exports from January to February 2008 reached 61.5 MT valued at US\$79.1 thousand. There was a reduction of 9.2 percent compared with the 2007 level. However, export revenues from January to February 2008 were 27.9 percent higher than the 2007 level.

Principal buyers of Philippine tomatoes in sauces and ketchup forms were the United Arab Emirates and Australia, respectively. The total volume of these tomato processed products accounted for 97 percent of the total quantity exported. Three percent comprised the tomato paste form.

Imports

Tomato imports in January to February 2008 at 4.6 thousand MT increased by 9.5 percent from its 2007 volume of 4.2 thousand MT. This was due to the huge entry of tomato paste from the People's Republic of China.

Figure 19. TOMATO: Volume and Value of exports, Philippines, January-February, 2006-2008

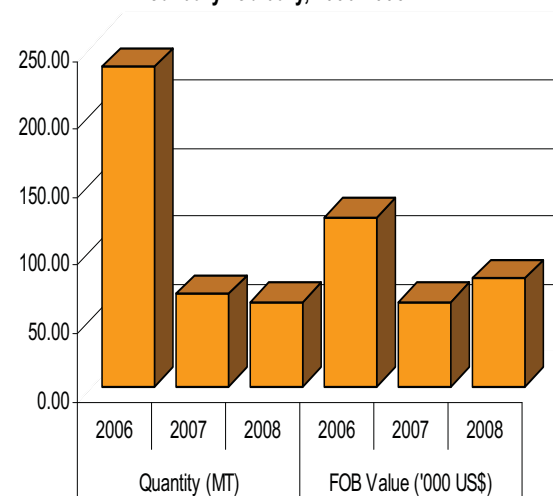
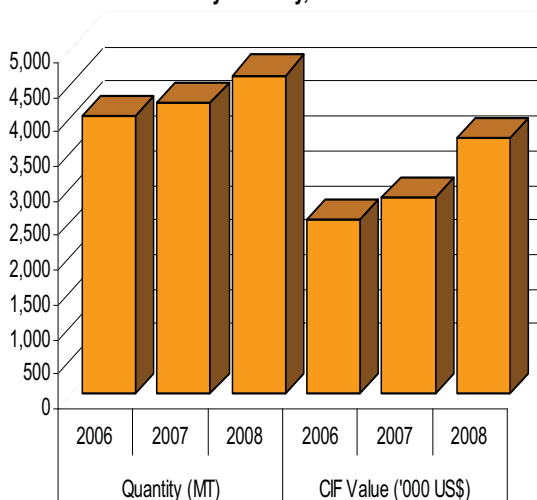


Figure 20. TOMATO: Volume and Value of imports, Philippines, January-February, 2006-2008



The 2008 import expenditures amounted to US\$3.7 million or 30.0 percent above the 2007 level.

GARLIC

Exports

From January to February 2008, the total volume of garlic exports was recorded at 17.13 MT valued at US\$9.0 thousand. This represented a big increase from its 2007 level of 0.02 MT. Value of exports was also higher at US\$8.98 thousand compared with the US\$0.04 thousand in the same period of 2007.

Volume of garlic exports from January to February 2007 and 2008 were relatively negligible compared with the 2006 exports of 952.3 MT for the same period. This was due to the discontinued shipments of fresh or chilled garlic to major clients during the whole year of 2007 up to February 2008.

Imports

The total volume of imported garlic in January to February 2008 was 8.22 thousand MT. This was 9.7 percent higher than its 2007 level. This was valued at US\$1.77 million, 11.1 percent below the 2007 value at US\$1.99 million.

Figure 21. GARLIC: Volume and Value of exports, Philippines, January-February, 2006-2008

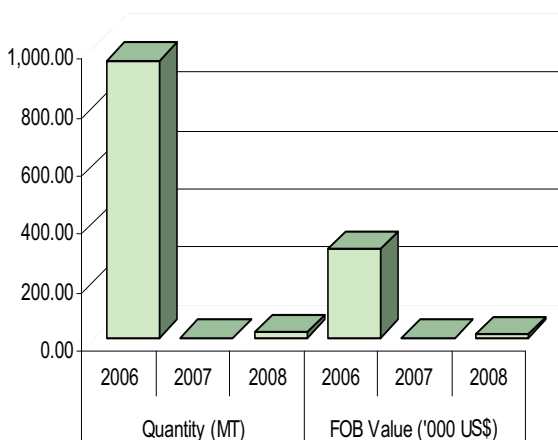
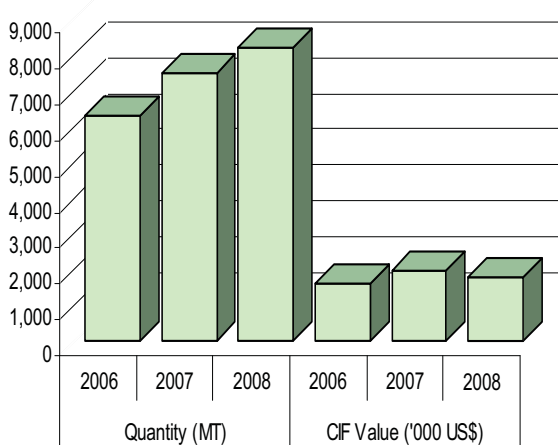


Figure 22. GARLIC: Volume and Value of imports, Philippines, January-February, 2006-2008



About 96 percent of garlic importation in January to February 2008 were fresh or chilled form. Garlic powder accounted for the remaining 4 percent.

ONION

Exports

Onion exports in January to February 2008 reached 0.54 thousand MT. Volume of shipments outside the country dropped from 1.43 thousand MT in 2007. Export receipts amounted to US\$0.16 million in same period of 2008.

Imports

The total volume of imported onion was 11.82 thousand MT in the first two months of 2008. This was 292.2 percent higher than the 3.01 thousand MT in the same period of 2007. Onion imports amounted to US\$1.62 million or 197.6 percent higher than the 2007 level.

The substantial expansion of onion imports was attributed to the large influx of fresh or chilled onions from India. Volume of fresh or chilled onions contributed around 99 percent to total onion imports.

Figure 23. ONION: Volume and Value of exports, Philippines, January-February, 2006-2008

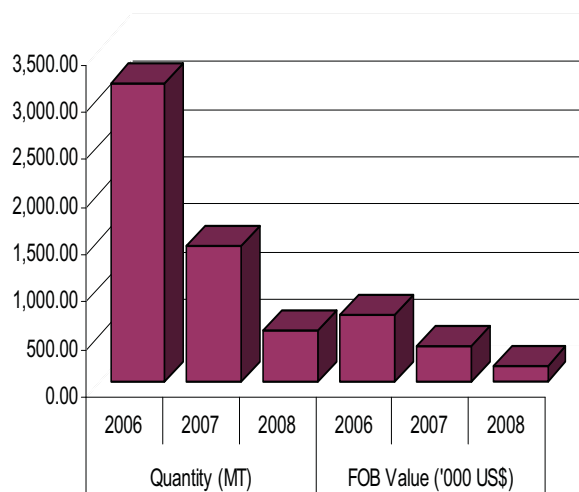
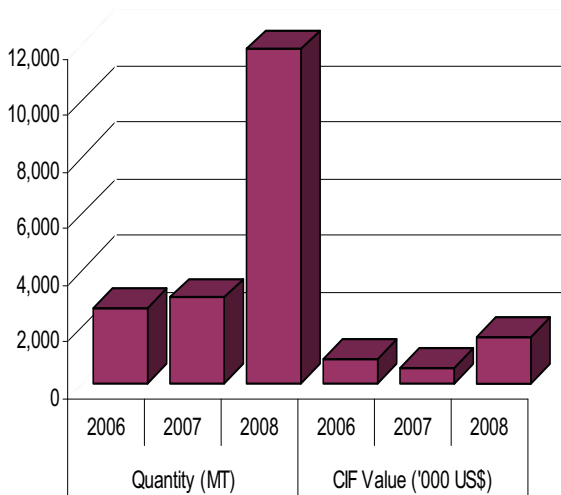


Figure 24. ONION: Volume and Value of imports, Philippines, January-February, 2006-2008



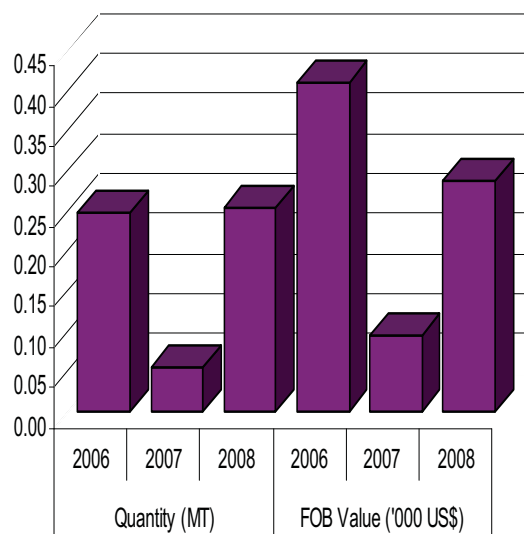
EGGPLANT

Exports

In the first two months of 2008, the volume of eggplant exports reached 0.25 MT valued at US\$0.29 thousand. Volume and value of eggplants were 360.0 percent and 200.0 percent higher than their corresponding 2007 levels at 0.06 MT and US\$0.10 thousand, respectively.

Fresh or chilled eggplants were mostly exported to Kuwait.

Figure 18. EGGPLANT: Volume and Value of exports, Philippines, January-February, 2006-2008



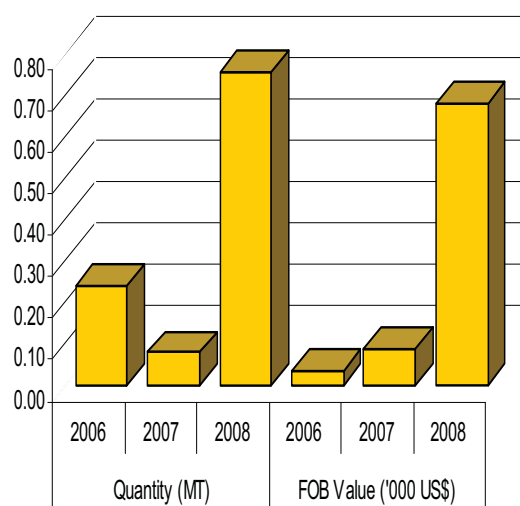
CAMOTE

Exports

From January to February 2008, volume of camote (sweet potato) exports was 0.76 MT valued at US\$0.68 thousand. The volume was up by 0.68 MT from its level in the same period of 2007.

Hongkong was the consistent buyer of Philippine camote (with high starch or inulin content, fresh, chilled, frozen or dried, whether or not sliced or in form of pellets) for the past three years.

Figure 25. CAMOTE: Volume and Value of exports, Philippines, January-February, 2006-2008



CASSAVA

Exports

The volume of manioc or cassava exports from January to February 2008 was 106.6 MT. This was 5.22 percent higher than the 2007 level of 101.4 MT. Exports receipts at US\$165.3 thousand represented a 19.34 percent increase from the 2007 level.

Exports consisted of manioc (cassava) with high starch or inulin content, fresh, chilled, frozen or dried, sliced or in form of pellets.

Imports

The country's total importation of cassava in January to February 2008 was 12.16 thousand MT valued at US\$3.41 million. This quantity indicated a 2.3 percent growth over the previous year's 11.89 thousand MT worth US\$2.49 million.

Cassava imports in processed form included starch and flour, meal or powder. Of the total import volume, cassava starch comprised 93 percent.

Thailand and Vietnam were the country's top sources of cassava starch.

Figure 26. CASSAVA: Volume and Value of exports, Philippines, January-February, 2006-2008

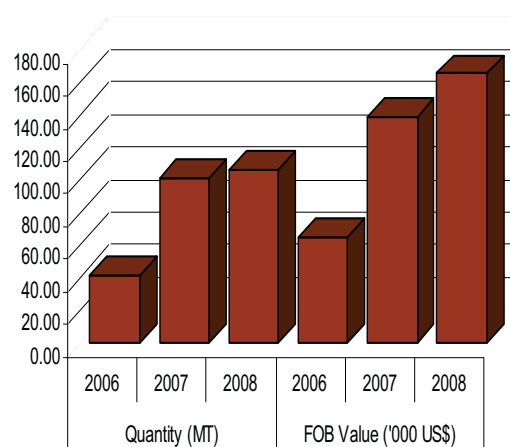
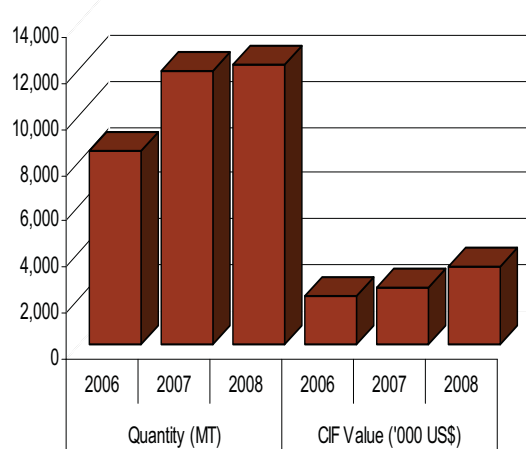


Figure 27. CASSAVA: Volume and Value of imports, Philippines, January-February, 2006-2008



APPENDIX

**Table 1. Volume of Production of Major Vegetables and Root Crops,
Philippines, January-March 2006-2008 (Metric Tons)**

Crop	January-March			Percent Change	
	2006	2007	2008P	2007/2006	2008P/2007
Major	643,508.8	733,560.5	742,700.6	13.99	1.25
Mongo	7,508.9	8,837.8	8,347.6	17.70	(5.55)
Peanut	12,100.1	12,892.3	12,298.7	6.55	(4.60)
Cabbage	23,933.5	25,550.5	27,688.5	6.76	8.37
Eggplant	62,257.8	67,137.1	64,508.0	7.84	(3.92)
Tomato	66,770.2	71,293.0	73,621.0	6.77	3.27
Garlic	12,124.3	10,835.4	10,969.6	(10.63)	1.24
Onion	33,349.8	37,564.3	36,143.3	12.64	(3.78)
Bermuda	12,137.8	15,418.7	14,260.4	27.03	(7.51)
Native	21,212.0	22,145.6	21,882.9	4.40	(1.19)
Camote	124,455.1	126,948.1	123,569.2	2.00	(2.66)
Cassava	301,009.1	372,502.0	385,554.7	23.75	3.50

P - Preliminary

Table 2. **MONGO**: Average Farmgate, Wholesale and Retail Prices,
Philippines, January-March, 2006-2008

Month	2006	2007	2008	Percent Change (07/06) (08/07)	
Farmgate (P/kg)					
Jan	29.84	35.66	35.66	19.50	0.00
Feb	31.82	31.30	35.34	(1.63)	12.91
Mar	31.94	30.14	32.81	(5.64)	8.86
Jan-Mar Ave.	31.20	32.37	34.60	3.74	6.91
Apr	31.39	31.04		(1.12)	
May	30.87	36.13		17.04	
Jun	30.36	32.13		5.83	
Jul	25.78	25.79		0.04	
Aug	27.37	26.68		(2.52)	
Sep	29.86	28.18		(5.63)	
Oct	29.40	29.72		1.09	
Nov	27.63	24.09		(12.81)	
Dec	28.51	29.15		2.24	
Annual	29.56	30.00		1.49	
Wholesale (P/kg)					
Jan	43.83	44.94	45.16	2.53	0.49
Feb	43.94	44.96	42.43	2.32	(5.63)
Mar	43.77	44.44	42.41	1.53	(4.57)
Jan-Mar Ave.	43.85	44.78	43.33	2.13	(3.23)
Apr	43.67	43.61		(0.14)	
May	43.56	42.15		(3.24)	
Jun	42.52	42.42		(0.24)	
Jul	41.06	42.67		3.92	
Aug	41.13	42.12		2.41	
Sep	40.73	42.14		3.46	
Oct	40.85	42.23		3.38	
Nov	42.41	42.34		(0.17)	
Dec	42.08	45.3		7.65	
Annual	41.99	43.25		3.00	
Retail (P/kg)					
Jan	47.59	50.17	51.96	5.43	3.55
Feb	47.32	51.51	51.67	8.85	0.32
Mar	47.35	51.19	51.32	8.12	0.25
Jan-Mar Ave.	47.42	50.96	51.65	7.46	1.36
Apr	47.29	51.18	51.22	8.23	0.07
May	46.57	50.89		9.29	
Jun	46.58	50.76		8.97	
Jul	46.97	51.33		9.28	
Aug	47.33	51.14		8.06	
Sep	48.06	51.39		6.94	
Oct	49.27	51.72		4.97	
Nov	49.70	51.86		4.34	
Dec	49.77	52.06		4.60	
Annual	47.81	51.26		7.22	

Source: AMSAD-BAS

Table 3a. **PEANUT**: Average Farmgate, Wholesale and Retail Prices,
Philippines, January-March, 2006-2008

	Peanut with shell, dry					Peanut without shell, dry				
Month	2006	2007	2008	Percent Change (07/06) (08/07)		2006	2007	2008	Percent Change (07/06) (08/07)	
Farmgate (P/kg)										
Jan	24.01	25.09	25.38	4.50	1.16	33.93	40.36	48.95	18.95	21.28
Feb	25.42	24.73	23.22	(2.71)	(6.11)	30.67	37.78	45.08	23.18	19.32
Mar	22.79	25.72	23.53	12.86	(8.51)	36.36	40.36	45.65	11.00	13.11
Jan-Mar Ave.	24.07	25.18	24.04	4.60	(4.51)	33.65	39.50	46.56	17.37	17.87
Apr	21.38	23.08		7.95		34.12	41.09		20.43	
May	21.41	21.59		0.84		34.47	45.81		32.90	
Jun	20.85	23.25		11.51		35.21	45.84		30.19	
Jul	23.33	25.32		8.53		35.95	47.36		31.74	
Aug	25.15	25.17		0.08		41.09	44.84		9.13	
Sep	24.84	25.89		4.23		41.34	44.30		7.16	
Oct	25.04	25.36		1.28		41.28	42.61		3.22	
Nov	24.46	25.61		4.70		42.28	45.37		7.31	
Dec	24.69	26.05		5.51		41.86	45.68		9.13	
Annual	23.61	24.74		4.79		37.38	43.45		16.24	
Wholesale (P/kg)										
Jan	38.93	39.5	43.78	1.46	10.84	49.89	51.70	57.59	3.63	11.39
Feb	33.72	40.18	44.08	19.16	9.71	47.94	51.88	59.47	8.22	14.63
Mar	39.38	42.64	44.32	8.28	3.94	46.72	52.04	60.29	11.39	15.85
Jan-Mar Ave.	37.34	40.77	44.06	9.19	8.06	48.18	51.87	59.12	7.66	13.96
Apr	38.9	45.45		16.84		47.58	51.80		8.87	
May	39.05	49.46		26.66		47.54	50.95		7.17	
Jun	36.69	49.78		35.68		47.39	55.06		16.18	
Jul	33.06	51.66		56.26		47.30	56.09		18.58	
Aug	36.64	41.15		12.31		47.82	55.71		16.50	
Sep	38.26	36.69		(4.10)		47.50	55.60		17.05	
Oct	39.53	47.36		19.81		47.56	55.65		17.01	
Nov	39.85	43.64		9.51		51.70	55.63		7.60	
Dec	39.19	40.9		4.36		52.41	56.24		7.31	
Annual	38	44.85		18.03		48.45	54.00		11.46	
Retail (P/kg)										
Jan	38.36	43.32	41.24	12.92	(4.79)	51.73	54.58	63.03	5.51	15.48
Feb	35.08	40.00	42.04	14.04	5.08	51.72	55.68	61.93	7.66	11.23
Mar	35.12	39.39	40.74	12.17	3.40	51.40	56.15	73.42	9.25	30.76
Jan-Mar Ave.	36.19	40.91	41.34	13.04	1.06	51.62	55.47	66.13	7.47	19.21
Apr	35.54	38.66	42.65	8.78	10.32	50.91	56.30	60.11	10.59	6.77
May	36.78	38.36		4.30		51.20	57.00		11.33	
Jun	36.78	39.52		7.44		52.19	57.33		9.85	
Jul	36.32	40.84		12.45		52.74	58.31		10.56	
Aug	35.83	40.76		13.77		53.04	58.31		9.94	
Sep	36.99	41.27		11.58		54.27	58.85		8.43	
Oct	38.87	41.82		7.59		55.03	59.82		8.70	
Nov	39.28	43.41		10.51		55.23	62.09		12.41	
Dec	40.84	43.09		5.51		57.07	63.40		11.09	
Annual	37.11	40.87		10.13		53.00	58.15		9.71	

Source: AMSAD-BAS

Table 3b. **PEANUT**: Average Farmgate Prices,
Philippines, January-March, 2006-2008

	Peanut with shell, fresh				
Month	2006	2007	2008	Percent Change (07/06) (08/07)	
Farmgate (P/kg)					
Jan	16.75	18.10	20.18	8.06	11.49
Feb	16.08	17.50	20.18	8.83	15.31
Mar	15.50	18.07	19.45	16.58	7.64
Jan-Mar Ave.	16.11	17.89	19.94	11.05	11.44
Apr	16.71	18.63		11.49	
May	16.91	18.79		11.12	
Jun	16.35	20.06		22.69	
Jul	17.00	20.90		22.94	
Aug	18.87	18.00		(4.61)	
Sep	16.11	17.31		7.45	
Oct	16.94	19.91		17.53	
Nov	17.37	20.39		17.39	
Dec	15.46	20.38		31.82	
Annual	16.67	19.00		13.98	

Source: AMSAD-BAS

Table 4. **CABBAGE**: Average Farmgate, Wholesale and Retail Prices, Philippines, January-March, 2006-2008

Month	2006	2007	2008	Percent Change	
				(07/06)	(08/07)
Farmgate (P/kg)					
Jan	13.53	6.9	8.15	(49.00)	18.12
Feb	7.65	9.75	4.81	27.45	(50.67)
Mar	9.44	8.35	4.76	(11.55)	(42.99)
Jan-Mar Ave.	10.21	8.33	5.91	(18.35)	(29.12)
Apr	15.58	6.47		(58.47)	
May	15.09	5.97		(60.44)	
Jun	9.49	6.36		(32.98)	
Jul	14.27	6.27		(56.06)	
Aug	15.49	7.43		(52.03)	
Sep	19.96	8.63		(56.76)	
Oct	11.42	15.02		31.52	
Nov	9.94	13.64		37.22	
Dec	8.78	20.21		130.18	
Annual	12.55	9.58		(23.67)	
Wholesale (P/kg)					
Jan	20.30	13.52	19.43	(33.40)	43.71
Feb	13.15	15.91	15.26	20.99	(4.09)
Mar	14.04	13.83	12.54	(1.50)	(9.33)
Jan-Mar Ave.	15.83	14.42	15.74	(8.91)	9.18
Apr	20.16	16.18		(19.74)	
May	19.62	15.79		(19.52)	
Jun	18.86	14.33		(24.02)	
Jul	24.04	14.48		(39.77)	
Aug	24.59	13.34		(45.75)	
Sep	25.59	17.76		(30.60)	
Oct	20.19	25.13		24.47	
Nov	17.35	22.24		28.18	
Dec	16.54	33.24		100.97	
Annual	19.48	17.90		(8.11)	
Retail (P/kg)					
Jan	34.71	30.08	37.21	(13.34)	23.70
Feb	29.33	30.69	31.54	4.63	2.78
Mar	27.98	28.79	29.25	2.90	1.59
Jan-Mar Ave.	30.67	29.85	32.67	(2.67)	9.42
Apr	34.17	30.88	25.63	(9.62)	(17.01)
May	34.20	30.94		(9.53)	
Jun	34.23	29.93		(12.56)	
Jul	36.75	29.94		(18.53)	
Aug	38.62	28.60		(25.96)	
Sep	42.02	32.34		(23.04)	
Oct	36.85	40.18		9.03	
Nov	32.75	40.25		22.91	
Dec	33.18	47.27		42.47	
Annual	34.59	33.27		(3.81)	

Source: AMSAD-BAS

Table 5. **EGGPLANT**: Average Farmgate, Wholesale and Retail Prices, Philippines, January-March, 2006-2008

Month	2006	2007	2008	Percent Change	
				(07/06)	(08/07)
Farmgate (P/kg)					
Jan	16.24	14.82	24.21	(8.74)	63.36
Feb	19.42	9.99	17.23	(48.56)	72.47
Mar	16.98	9.20	16.17	(45.82)	75.76
Jan-Mar Ave.	17.55	11.34	19.20	(35.39)	69.39
Apr	15.03	9.20		(38.79)	
May	13.54	10.62		(21.57)	
Jun	10.98	11.05		0.64	
Jul	16.19	10.50		(35.15)	
Aug	11.73	10.74		(8.44)	
Sep	9.46	9.15		(3.28)	
Oct	14.71	13.36		(9.18)	
Nov	12.83	18.49		44.12	
Dec	14.39	15.57		8.20	
Annual	14.29	11.89		(16.79)	
Wholesale (P/kg)					
Jan	24.35	23.76	31.18	(2.42)	31.23
Feb	22.75	16.54	27.06	(27.30)	63.60
Mar	21.99	14.68	23.42	(33.24)	59.54
Jan-Mar Ave.	23.03	18.33	27.22	(20.42)	48.53
Apr	20.87	14.3		(31.48)	
May	19.7	13.85		(29.70)	
Jun	16.01	12.31		(23.11)	
Jul	20.27	14.6		(27.97)	
Aug	20.65	15.12		(26.78)	
Sep	15.04	14.15		(5.92)	
Oct	25.29	19.4		(23.29)	
Nov	20.59	23.6		14.62	
Dec	20.93	28.99		38.51	
Annual	20.91	17.38		(16.88)	
Retail (P/kg)					
Jan	34.30	33.82	40.75	(1.40)	20.49
Feb	34.81	28.47	39.03	(18.22)	37.10
Mar	30.61	24.36	35.63	(20.41)	46.24
Jan-Mar Ave.	33.24	28.88	38.47	(13.11)	33.19
Apr	31.11	24.58	31.49	(21.00)	28.15
May	29.98	23.72		(20.87)	
Jun	27.07	21.70		(19.82)	
Jul	29.87	24.92		(16.59)	
Aug	30.89	24.78		(19.79)	
Sep	24.71	25.43		2.93	
Oct	34.59	29.98		(13.32)	
Nov	30.72	34.69		12.93	
Dec	30.48	40.30		32.23	
Annual	30.75	28.03		(8.84)	

Source: AMSAD-BAS

Table 6. **TOMATO:** Average Farmgate, Wholesale and Retail Prices, Philippines, January-March, 2006-2008

Month	2006	2007	2008	Percent Change	
				(07/06)	(08/07)
Farmgate (P/kg)					
Jan	9.87	10.26	16.29	3.95	58.77
Feb	12.36	6.88	13.72	(44.34)	99.42
Mar	9.87	5.85	8.37	(40.73)	43.08
Jan-Mar Ave.	10.70	7.66	12.79	(28.38)	66.94
Apr	17.91	8.45		(52.82)	
May	14.87	15.34		3.16	
Jun	11.57	21.05		81.94	
Jul	5.37	11.69		117.69	
Aug	4.66	9.09		95.06	
Sep	10.71	9.92		(7.38)	
Oct	19.54	7.57		(61.26)	
Nov	12.98	15.87		22.27	
Dec	11.53	15.34		33.04	
Annual	11.77	11.44		(2.80)	
Wholesale (P/kg)					
Jan	19.82	18.41	23.92	(7.11)	29.93
Feb	16.03	12.48	22.67	(22.15)	81.65
Mar	17.25	9.33	16.24	(45.91)	74.06
Jan-Mar Ave.	17.70	13.41	20.94	(24.26)	56.22
Apr	20.84	11.07		(46.88)	
May	19.03	15.71		(17.45)	
Jun	17.45	26.95		54.44	
Jul	15.99	31.1		94.50	
Aug	11.95	23.14		93.64	
Sep	15.42	21.72		40.86	
Oct	30.05	18.87		(37.20)	
Nov	29.67	21.17		(28.65)	
Dec	22.03	29.23		32.68	
Annual	19.56	19.74		0.92	
Retail (P/kg)					
Jan	32.46	29.16	37.85	(10.16)	29.77
Feb	27.36	23.95	36.15	(12.45)	50.90
Mar	28.06	20.44	29.24	(27.14)	43.02
Jan-Mar Ave.	29.29	24.52	34.41	(16.29)	40.33
Apr	30.89	21.73	25.87	(29.64)	19.02
May	28.92	25.85		(10.60)	
Jun	28.88	39.05		35.20	
Jul	26.06	43.48		66.84	
Aug	22.91	35.35		54.31	
Sep	26.33	33.54		27.38	
Oct	43.42	31.94		(26.44)	
Nov	43.22	34.37		(20.47)	
Dec	33.79	43.22		27.92	
Annual	31.01	31.89		2.83	

Source: AMSAD-BAS

Table 7. **GARLIC:** Average Farmgate, Wholesale and Retail Prices,
Philippines, January-March, 2006-2008

Month	2006	2007	2008	Percent Change	
				(07/06)	(08/07)
Farmgate (P/kg)					
Jan	85.77	88.97	57.66	3.73	(35.19)
Feb	79.21	65.86	52.44	(16.85)	(20.38)
Mar	80.12	52.48	49.08	(34.50)	(6.48)
Jan-Mar Ave.	81.70	69.10	53.06	(15.42)	(23.22)
Apr	93.69	66.65		(28.86)	
May	88.00	60.34		(31.43)	
Jun	101.33	58.48		(42.29)	
Jul	83.63	69.12		(17.35)	
Aug	85.66	71.55		(16.47)	
Sep	93.93	78.40		(16.53)	
Oct	95.24	55.92		(41.29)	
Nov	94.15	85.94		(8.72)	
Dec	86.89	86.64		(0.29)	
Annual	88.97	70.03		(21.29)	
Wholesale (P/kg)					
Jan	131.29	143.20	123.40	9.07	(13.83)
Feb	123.05	136.83	113.66	11.20	(16.93)
Mar	111.43	119.09	116.79	6.87	(1.93)
Jan-Mar Ave.	121.92	133.04	117.95	9.12	(11.34)
Apr	117.18	112.65		(3.87)	
May	125.27	117.49		(6.21)	
Jun	130.00	115.44		(11.20)	
Jul	132.52	126.35		(4.66)	
Aug	129.27	123.16		(4.73)	
Sep	133.49	124.02		(7.09)	
Oct	136.59	124.00		(9.22)	
Nov	142.54	117.54		(17.54)	
Dec	145.87	128.32		(12.03)	
Annual	130.03	123.17		(5.28)	
Retail (P/kg)					
Jan	172.83	178.62	161.93	3.35	(9.35)
Feb	172.29	176.01	158.54	2.16	(9.92)
Mar	164.31	168.00	155.98	2.25	(7.16)
Jan-Mar Ave.	169.81	174.21	158.82	2.59	(8.84)
Apr	166.43	157.91	123.39	(5.12)	(21.86)
May	173.08	156.49		(9.59)	
Jun	172.74	158.27		(8.37)	
Jul	171.15	160.81		(6.04)	
Aug	170.99	158.29		(7.43)	
Sep	171.15	162.49		(5.06)	
Oct	176.72	161.47		(8.63)	
Nov	177.48	162.21		(8.60)	
Dec	178.57	166.47		(6.78)	
Annual	172.16	163.60		(4.97)	

Source: AMSAD-BAS

Table 8a. **ONION:** Average Farmgate, Wholesale and Retail Prices,
Philippines, January-March, 2006-2008

Month	Onion Red Creole (Bermuda Red)				Onion White (Yellow Granex)			
	2006	2007	2008	Percent Change (07/06) (08/07)	2006	2007	2008	Percent Change (07/06) (08/07)
Farmgate (P/kg)								
Jan	42.90	32.51	55.75	(24.22) 71.49	17.20	25.38	38.52	47.56 51.77
Feb	27.16	23.04	30.74	(15.17) 33.42	26.56	18.39	30.03	(30.76) 63.30
Mar	26.54	13.55	26.85	(48.94) 98.15	27.76	9.27	20.01	(66.61) 115.86
Jan-Mar Ave.	32.20	23.03	37.78	(28.47) 64.02	23.84	17.68	29.52	(25.84) 66.97
Apr	30.35	8.94		(70.54)	14.74	14.78		0.27
May	35.91	13.73		(61.77)	18.33	12.67		(30.88)
Jun	36.71	12.29		(66.52)	-	-		
Jul	36.71	11.28		(69.27)	-	-		
Aug	34.19	13.94		(59.23)	-	-		
Sep	43.01	22.79		(47.01)	-	-		
Oct	45.73	27.35		(40.19)	-	-		
Nov	46.3	33.54		(27.56)	-	-		
Dec	44.11	-			-	-		
Annual	37.47	19.36		(48.33)	20.92	16.1		(23.04)
Wholesale (P/kg)								
Jan	59.98	47.34	106.82	(21.07) 125.64	22.34	28.9	48.31	29.36 67.16
Feb	48.01	38.71	48.57	(19.37) 25.47	26.59	24.39	29.53	(8.27) 21.07
Mar	43.46	28.46	37.42	(34.51) 31.48	29.72	16.13	19.08	(45.73) 18.29
Jan-Mar Ave.	50.48	38.17	64.27	(24.39) 68.38	26.22	23.14	32.31	(11.74) 39.61
Apr	40.79	21.34		(47.68)	26.3	12.83		(51.22)
May	45.44	23.15		(49.05)	25.89	22.76		(12.09)
Jun	49.29	24.77		(49.75)	25.76	26.01		0.97
Jul	47.08	28.92		(38.57)	24.72	32.06		29.69
Aug	45.7	30.35		(33.59)	29.46	37.72		28.04
Sep	51.73	36.58		(29.29)	35.28	44.35		25.71
Oct	68.31	38.44		(43.73)	52.09	45.63		(12.40)
Nov	72.73	48.88		(32.79)	45.35	45.43		0.18
Dec	63.42	77.6		22.36	51.17	48.39		(5.43)
Annual	52.74	36.49		(30.81)	31.8	30.65		(3.62)
Retail (P/kg)								
Jan	73.58	66.38	133.10	(9.79) 100.53	48.70	55.50	88.38	13.96 59.25
Feb	66.45	58.35	77.62	(12.19) 33.03	46.88	48.97	62.69	4.47 28.01
Mar	59.77	48.02	55.14	(19.66) 14.83	49.18	40.22	48.34	(18.22) 20.18
Jan-Mar Ave.	66.60	57.58	88.62	(13.54) 53.90	48.25	48.23	66.47	(0.05) 37.82
Apr	57.02	38.40	59.38	(32.66) 54.65	46.71	34.53	51.29	(26.09) 48.55
May	60.48	36.78		(39.19)	47.36	35.30		(25.46)
Jun	62.98	39.23		(37.70)	47.48	40.89		(13.87)
Jul	61.34	42.71		(30.37)	46.45	51.12		10.05
Aug	61.12	45.50		(25.56)	45.84	56.32		22.87
Sep	65.98	50.14		(24.00)	50.63	63.46		25.33
Oct	80.73	52.38		(35.12)	65.04	72.48		11.44
Nov	86.72	62.76		(27.63)	69.34	75.22		8.47
Dec	79.75	86.33		8.26	62.2	80.92		30.10
Annual	67.94	52.12		(23.28)	51.88	52.15		0.52

Source: AMSAD-BAS

Table 8b. **ONION**: Average Farmgate, Wholesale and Retail Prices,
Philippines, January-March, 2006-2008

	Onion native (red shallot), multiplier				
Month	2006	2007	2008	Percent Change (07/06) (08/07)	
Farmgate (P/kg)					
Jan	22.91	17.72	28.57	(22.65)	61.23
Feb	20.25	17.97	19.4	(11.26)	7.96
Mar	21.49	20.63	23.53	(4.00)	14.06
Jan-Mar Ave.	21.55	18.77	23.83	(12.88)	26.95
Apr	18.1	16.71		(7.68)	
May	19.07	17.82		(6.55)	
Jun	20.84	18.62		(10.65)	
Jul	15.18	18.69		23.12	
Aug	15.32	18.84		22.98	
Sep	16.09	18.98		17.96	
Oct	25.56	21.82		(14.63)	
Nov	18.77	18.98		1.12	
Dec	18.77	13.96		(25.63)	
Annual	19.36	18.39		(5.01)	

Source: AMSA

Table 9. **CAMOTE**: Average Farmgate, Wholesale and Retail Prices, Philippines, January-March, 2006-2008

Month	2006	2007	2008	Percent Change	
				(07/06)	(08/07)
Farmgate (P/kg)					
Jan	8.30	9.22	8.26	11.08	(10.41)
Feb	8.14	8.84	8.41	8.60	(4.86)
Mar	8.00	7.58	8.20	(5.25)	8.18
Jan-Mar Ave.	8.15	8.55	8.29	4.91	(3.00)
Apr	7.14	7.42		3.92	
May	7.18	7.61		5.99	
Jun	7.45	7.82		4.97	
Jul	7.54	7.97		5.70	
Aug	7.37	7.80		5.83	
Sep	8.12	7.78		(4.19)	
Oct	8.69	9.60		10.47	
Nov	9.00	9.51		5.67	
Dec	8.58	9.37		9.21	
Annual	7.96	8.38		5.28	
Wholesale (P/kg)					
Jan	9.72	11.81	12.10	21.50	2.46
Feb	9.41	11.02	11.46	17.11	3.99
Mar	9.24	10.33	11.45	11.80	10.84
Jan-Mar Ave.	9.46	11.05	11.67	16.88	5.58
Apr	9.66	10.98		13.66	
May	10.82	10.57		(2.31)	
Jun	11.67	10.57		(9.43)	
Jul	11.61	11.45		(1.38)	
Aug	12.46	12.87		3.29	
Sep	13.24	12.48		(5.74)	
Oct	12.51	12.70		1.52	
Nov	11.48	12.21		6.36	
Dec	11.80	11.61		(1.61)	
Annual	11.11	11.54		3.87	
Retail (P/kg)					
Jan	14.69	17.37	19.01	18.23	9.46
Feb	14.45	17.03	18.75	17.88	10.04
Mar	14.17	16.75	18.54	18.18	10.71
Jan-Mar Ave.	14.44	17.05	18.76	18.10	10.06
Apr	14.72	16.58	17.57	12.63	5.95
May	15.92	16.93		6.35	
Jun	16.67	17.41		4.44	
Jul	17.10	17.98		5.16	
Aug	19.13	18.92		(1.07)	
Sep	19.69	19.64		(0.23)	
Oct	19.41	19.51		0.51	
Nov	18.75	18.88		0.71	
Dec	17.87	18.95		6.04	
Annual	16.87	18.00		6.71	

Source: AMSAD-BAS

Table 10. **CASSAVA**: Average Farmgate, Wholesale and Retail Prices, Philippines, January-March, 2006-2008

Month	2006	2007	2008	Percent Change	
				(07/06)	(08/07)
Farmgate (P/kg)					
Jan	4.62	4.17	3.99	(9.74)	(4.32)
Feb	4.65	4.40	4.13	(5.38)	(6.14)
Mar	4.53	4.38	4.23	(3.31)	(3.42)
Jan-Mar Ave.	4.60	4.32	4.12	(6.16)	(4.63)
Apr	5.20	4.91		(5.58)	
May	5.14	5.45		6.03	
Jun	5.30	5.55		4.72	
Jul	5.31	4.76		(10.36)	
Aug	5.37	4.79		(10.80)	
Sep	5.53	4.88		(11.75)	
Oct	5.47	4.65		(14.99)	
Nov	5.37	4.19		(21.97)	
Dec	5.32	4.34		(18.42)	
Annual	5.15	4.70		(8.74)	
Wholesale (P/kg)					
Jan	5.14	6.24	5.61	21.40	(10.10)
Feb	5.23	6.30	6.01	20.46	(4.60)
Mar	5.37	6.31	5.52	17.50	(12.52)
Jan-Mar Ave.	5.25	6.28	5.71	19.76	(9.07)
Apr	4.64	5.57		20.04	
May	4.74	5.71		20.46	
Jun	4.84	5.77		19.21	
Jul	5.00	5.59		11.80	
Aug	5.07	6.00		18.34	
Sep	5.26	5.67		7.79	
Oct	5.54	6.73		21.48	
Nov	5.51	6.82		23.77	
Dec	5.72	6.78		18.53	
Annual	5.21	6.13		17.66	

**Table 11. Quantity and Value of Major Vegetable and Root Crops Exports,
Philippines, January-February, 2006-2008**

Commodity	Quantity (MT)			% Change (08/07)	FOB Value ('000 US\$)			% Change (08/07)
	2006	2007	2008		2006	2007	2008	
Mongo	1.18	0.47	2.79	487.97	1.69	2.53	2.73	7.95
Processed	1.18	0.47	2.79	487.97	1.69	2.53	2.73	7.95
Peanut	84.76	85.34	59.00	(30.87)	230.93	187.32	164.56	(12.15)
Processed	84.76	85.34	59.00	(30.87)	230.93	187.32	164.56	(12.15)
Cabbage		6.38				1.81		
Fresh		6.38				1.81		
Eggplant	0.25	0.06	0.25	360.00	0.41	0.10	0.29	200.00
Fresh	0.25	0.06	0.25	360.00	0.41	0.10	0.29	200.00
Tomato	234.60	67.80	61.54	(9.23)	124.55	61.87	79.13	27.89
Processed	234.60	67.80	61.54	(9.23)	124.55	61.87	79.13	27.89
Garlic	952.28	0.02	17.13	114,106.67	303.70	0.04	8.98	20,297.73
Fresh	952.28				303.70			
Processed		0.02	17.13	114,106.67		0.04	8.98	20,297.73
Onions	3,140.26	1,434.86	545.84	(61.96)	719.06	368.99	159.04	(56.90)
Fresh	60.00				9.00			
Processed	3,080.26	1,434.86	545.84	(61.96)	710.06	368.99	159.04	(56.90)
Cassava	41.51	101.36	106.65	5.22	64.83	138.45	165.28	19.38
Processed	41.51	101.36	106.65	5.22	64.83	138.45	165.28	19.38
Camote	0.24	0.08	0.76	870.51	0.04	0.09	0.68	700.00
Processed	0.24	0.08	0.76	870.51	0.04	0.09	0.68	700.00

Source: AMSAD-BAS

**Table 12. Quantity and Value of Major Vegetable and Root Crops Imports,
Philippines, January-February, 2006-2008**

Commodity	Quantity (MT)			% Change (08/07)	CIF Value ('000 US\$)			% Change (08/07)
	2006	2007	2008		2006	2007	2008	
Mongo	1,859.07	4,382.89	11,824.58	169.79	395.62	858.72	1,476.80	71.98
Processed	1,859.07	4,382.89	11,824.58	169.79	395.62	858.72	1,476.80	71.98
Peanut	405.71	166.53	180.73	8.52	452.48	226.61	386.74	70.66
Processed	405.71	166.53	180.73	8.52	452.48	226.61	386.74	70.66
Cabbage	10.00				24.48			
Processed	10.00				24.48			
Tomato	4,011.80	4,200.90	4,599.58	9.49	2,521.56	2,839.41	3,689.86	29.95
Fresh	0.41		0.16		0.33		0.57	
Processed	4,011.39	4,200.90	4,599.42	9.49	2,521.22	2,839.41	3,689.29	29.93
Garlic	6,331.79	7,492.45	8,221.17	9.73	1,601.08	1,991.16	1,770.17	(11.10)
Fresh	6,136.63	7,106.84	7,921.00	11.46	1,365.53	1,309.27	1,372.07	4.80
Processed	195.16	385.61	300.17	(22.16)	235.54	681.90	398.10	(41.62)
Onions	2,660.38	3,012.35	11,815.81	292.25	885.14	545.23	1,622.67	197.61
Fresh	2,432.18	2,862.77	11,677.34	307.90	324.44	341.67	1,395.02	308.30
Processed	228.20	149.58	138.47	(7.43)	560.69	203.57	227.65	11.83
Cassava	8,394.63	11,890.68	12,159.56	2.26	2,116.06	2,494.38	3,405.31	36.52
Processed	8,394.63	11,890.68	12,159.56	2.26	2,116.06	2,494.38	3,405.31	36.52

Source: AMSAD-BAS

Table 13. Quantity and Value of Major Vegetable and Root Crops Exports and Imports, by Top Market, Philippines, January-February, 2008

Commodity	Exports			Imports		
	Country of Destination	Quantity (metric ton)	FOB Value (US\$ '000)	Country of Origin	Quantity (metric ton)	CIF Value (US\$ '000)
MONGO		2.79	2.73		11,824.58	1,476.80
<i>Processed</i>		2.79	2.73		11,824.58	1,476.80
	USA	0.93	1.00	Indonesia	3,167.98	576.55
	Others	1.86	1.73	Others	8,656.60	900.25
PEANUT		59.00	164.56		180.73	386.74
<i>Processed</i>		59.00	164.56		180.73	386.74
	USA	14.18	42.57	China	142.99	325.96
	Others	44.81	121.98	Others	37.73	60.79
EGGPLANT		0.25	0.29			
<i>Fresh</i>		0.25	0.29			
	Kuwait	0.24	0.26			
	Others	0.01	0.03			
TOMATO		61.54	79.13		4,599.58	3,689.86
<i>Fresh</i>					0.16	0.57
				Singapore	0.16	0.57
<i>Processed</i>		61.54	79.13		4,599.42	3,689.29
	UAE	21.04	19.83	China	3,048.57	2,298.40
	Others	40.51	59.31	Others	1,550.85	1,390.89
GARLIC		17.13	8.98		8,221.17	1,770.17
<i>Fresh</i>					7,921.00	1,372.07
				China	4,913.00	1,064.50
				Others	3,008.00	307.57
<i>Processed</i>		17.13	8.98		300.17	398.10
	Taiwan	16.92	7.70	USA	59.97	206.21
	Others	0.21	1.28	Others	240.20	191.90
ONIONS		545.84	159.04		11,815.81	1,622.67
<i>Fresh</i>					11,677.34	1,395.02
				India	6,909.79	819.79
				Others	4,767.55	575.22
<i>Processed</i>		545.84	159.04		138.47	227.65
	Indonesia	492.74	132.91	Spain	20.00	90.98
	Others	53.10	26.12	Others	118.47	136.68
CASSAVA		106.65	165.28		12,159.56	3,405.31
<i>Processed</i>		106.65	165.28		12,159.56	3,405.31
	USA	62.11	86.92	Vietnam	8,018.60	2,177.67
	Others	44.54	78.36	Others	4,140.95	1,227.64
CAMOTE		0.76	0.68			
<i>Processed</i>		0.76	0.68			
	USA	0.34	0.59			
	Others	0.42	0.10			

Source: AMSAD-BAS

Department of Agriculture
BUREAU OF AGRICULTURAL STATISTICS
1184 Ben-Lor Bldg., Quezon Avenue, Quezon City
CROPS STATISTICS DIVISION
Tel No. +632 - 3712067
infobas@mozcom.com

<http://bas.gov.ph>